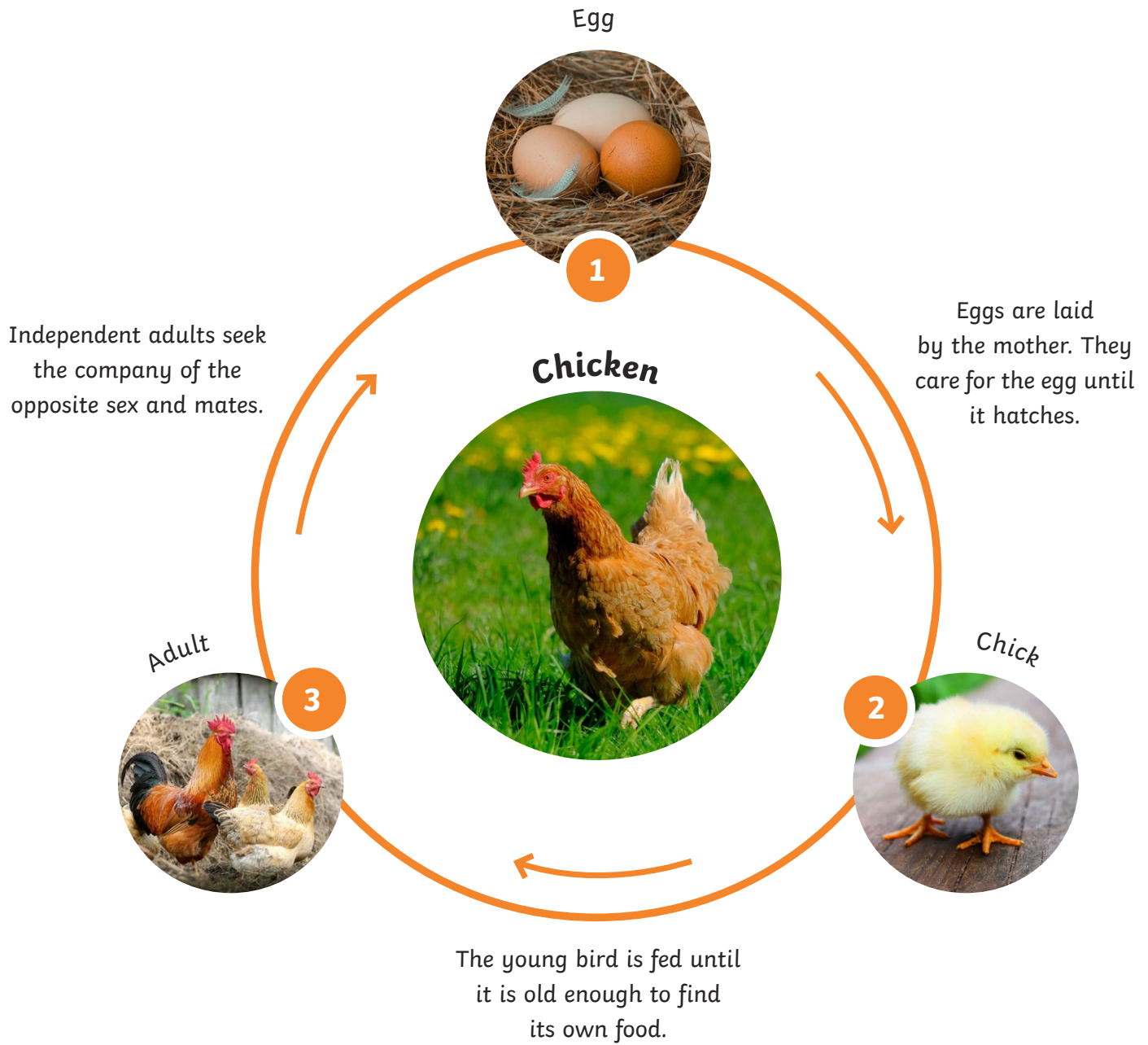


The Bird Life Cycle



Other Birds

Ostrich



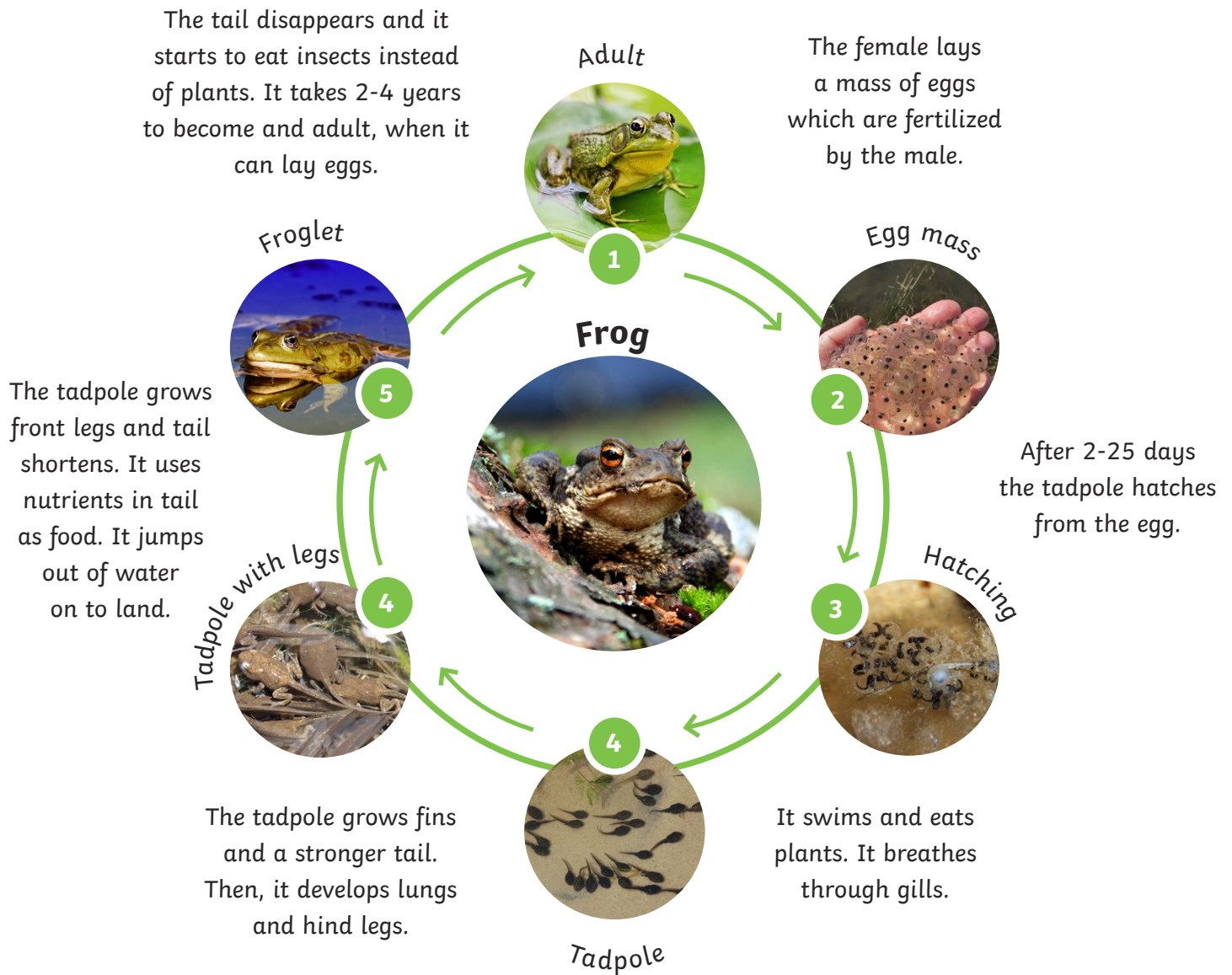
penguin



Eagle



The Amphibian Life Cycle



Other Amphibians

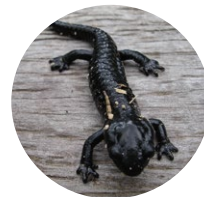
Salamander



Toad

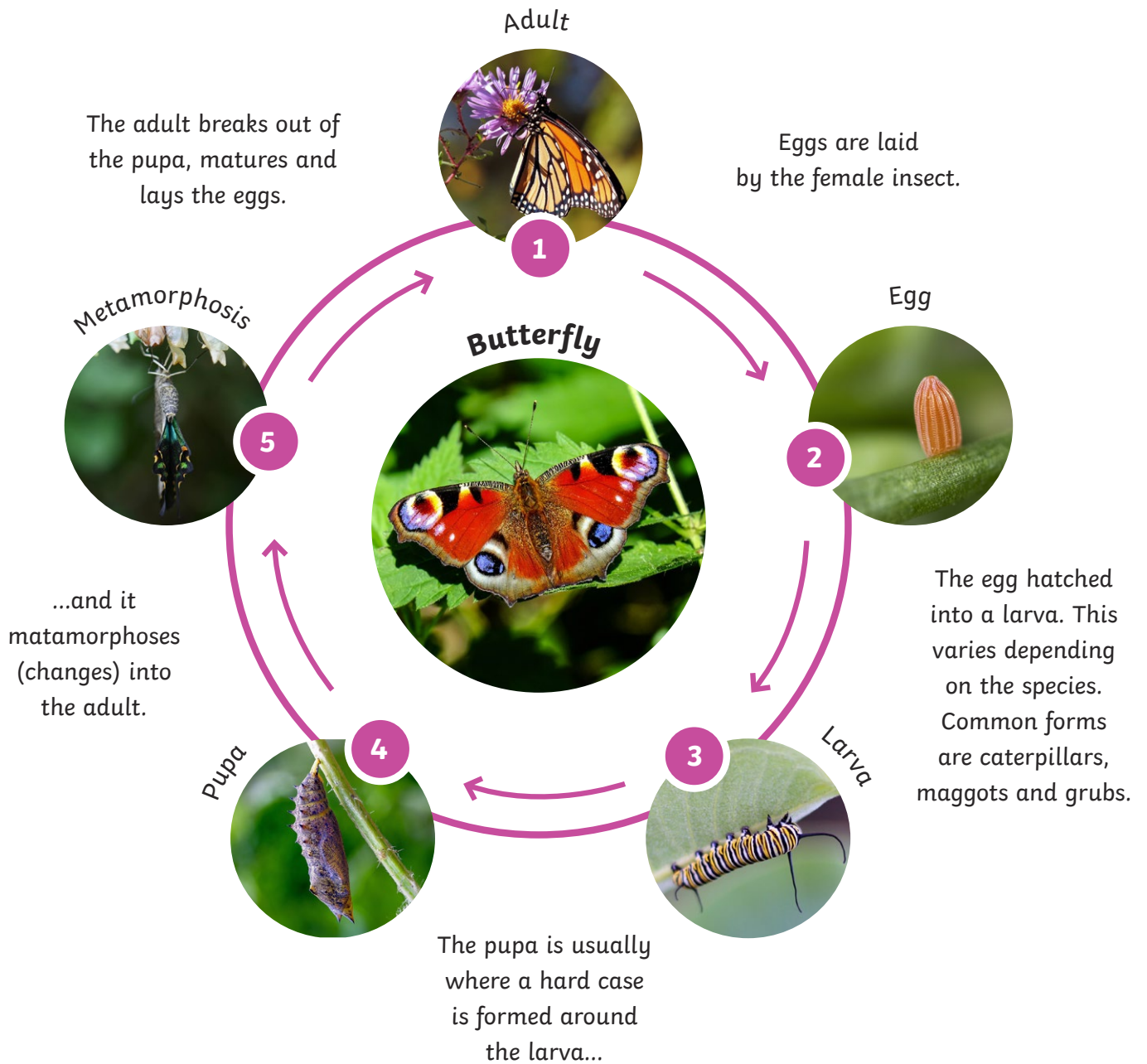


Newt



The Insect Life Cycle

Complete Metamorphosis

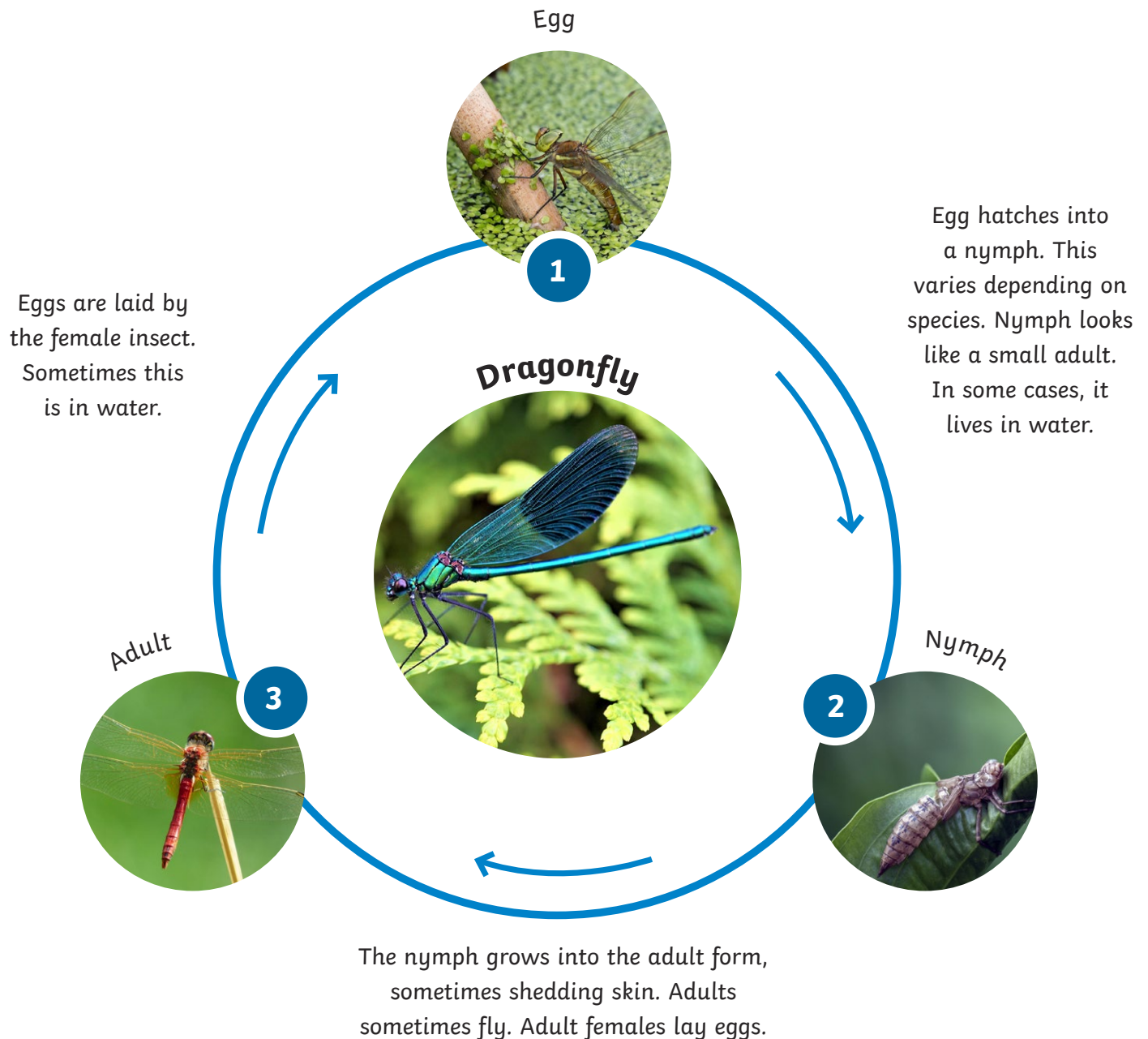


Other Insects that Complete Metamorphosis



The Insect Life Cycle

Incomplete Metamorphosis

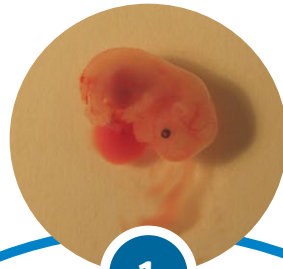


Other Insects that Undergo Incomplete Metamorphosis



The Mammal Cycle

Embryo



1

Embryo grow inside the mother, where it is completely reliant upon the mother.

Dogs



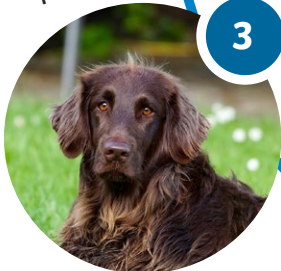
Young



2

Main period of growth and developing independence from other parents.

Adult



3

Independent adult usually seeks company from the opposite sex and mates. Adult female nurses their young.

Other Mammals

Dolphin



Elephant



Human



'mouse embryo' by [Pazit Polak](#) is licensed under [CC BY 2.0](#)