

Part 3 - Reasoning

WALT: Understand Angles

Reasoning 1

Which is the odd one out?

three-quarter turn



120°

Explain your answer.

Reasoning 1

Which is the odd one out?

three-quarter turn



120°

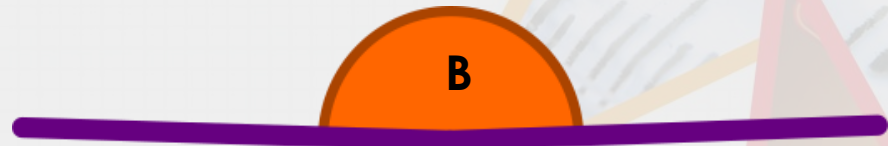
Explain your answer.

Three-quarter turn because...

Reasoning 1

Which is the odd one out?

three-quarter turn



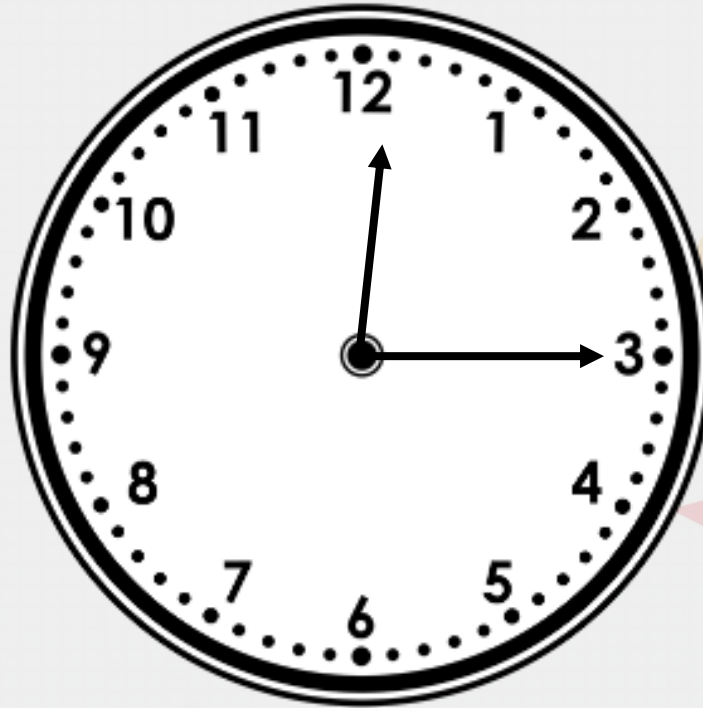
120°

Explain your answer.

Three-quarter turn because the others represent angles less than 180° .

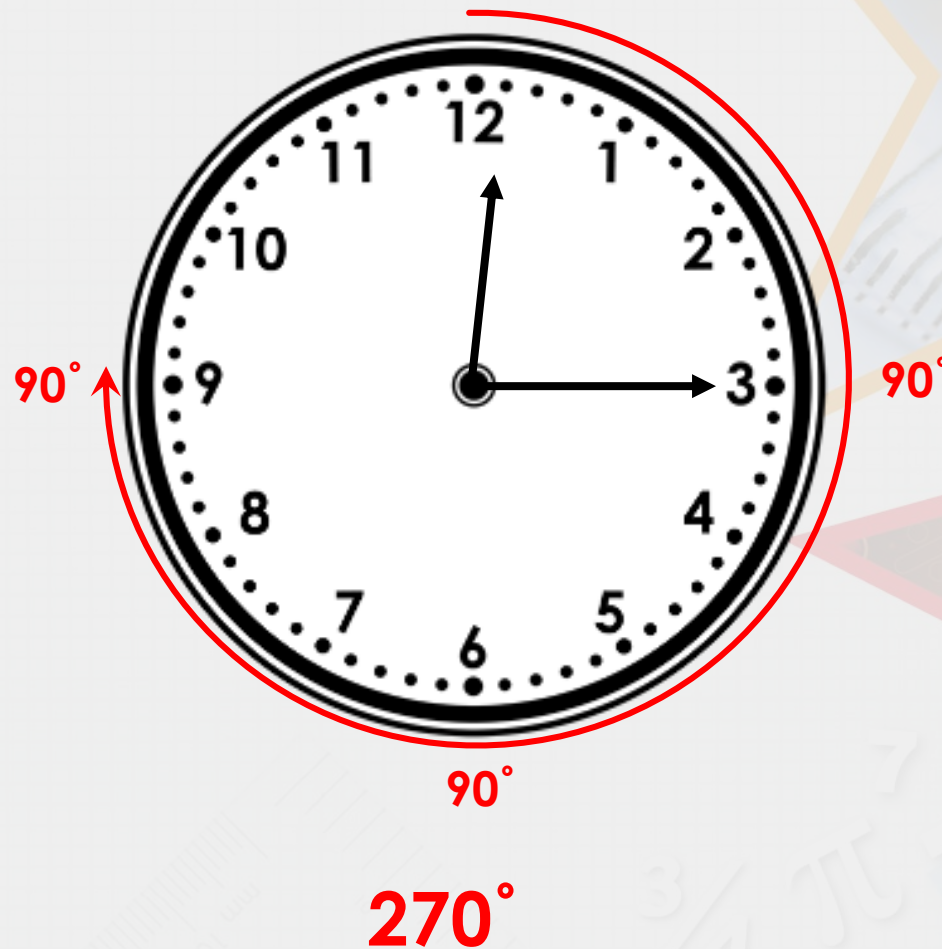
Problem Solving 1

The clock starts at 12:15. How many degrees has the minute hand moved to get to 13:00?



Problem Solving 1

The clock starts at 12:15. How many degrees has the minute hand moved to get to 13:00?



Problem Solving 2

You are at the lion facing west. If you turn 180° clockwise which animal would you be facing?



Problem Solving 2

You are at the lion facing west. If you turn 180° clockwise which animal would you be facing?



cheetah

Well done! It's over to you now.

Go to Part 4 and choose your Star Challenge! Normal rules apply: page 1 will give you an easier challenge, page 2 will be about the same as what we've just practised and page 3 will be more of a stretch.

You only need to do the first set of questions on your chosen Star Challenge – the 'A' questions. If you want extra practice, you can then do the next set of questions – the 'B' questions. When you finish, don't forget to mark your answers before sharing, so I can see where you need help.