

WALT research cityscapes.

WILF:

- Identify key features in Monet's cityscapes.
- Compare landscapes to cityscapes.
- Sketch a citiscape.



A cityscape is a painting of man made buildings.



laude Monet, The Houses of Parliament, Fog Effect (Le Parlement, effet de brouillard), 1904



Claude Monet, The Pont Neuf (Le Pont Neuf), 1871



Claude Monet, The Grand Canal (Le Grand Canal), 1908 |



Claude Monet, Waterloo Bridge, Overcast Weather (Waterloo Bridge, temps couvert), 1899-1903

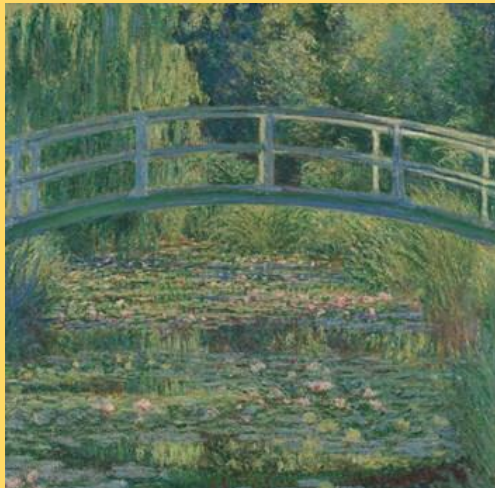


Your Activity:

Compare Monet's cityscapes in this slideshow to the landscapes you researched. How are they the same? How are they different?

What tones and colours are used in the cityscapes?
What are the brush strokes and line definitions like?
Which do you prefer and why?

Then, sketch or paint a cityscape of Lewes in the style of Monet. It can be from an image, or from the view out your window or on a walk with an adult. It must include buildings.



Lewes

