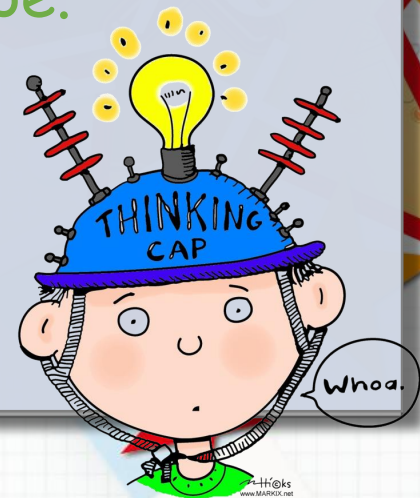


## WALT identify regular and irregular polygons and their angles.

*WILF:*

- *Identify regular and irregular polygons.*
- *Use your knowledge of shapes and angles to help you.*
- *Use a protractor to measure angles in a shape.*
- *Use a ruler to measure lengths.*

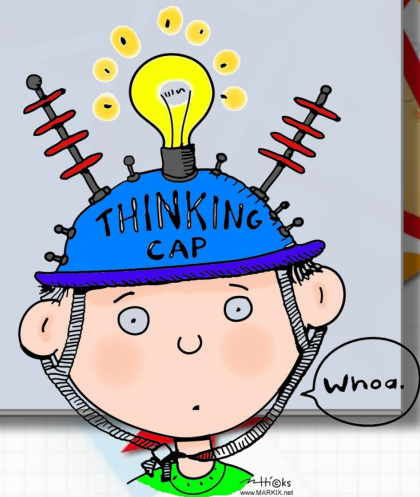


Recap:

Year 5 – Summer Block 2 – Properties of Shape

What is a polygon?

What is the difference between a regular and an irregular polygon?



# Recap:

Year 5 – Summer Block 2 – Properties of Shape

## What is a polygon?

A polygon is a shape with straight sides.

## What is the difference between a regular and an irregular polygon?

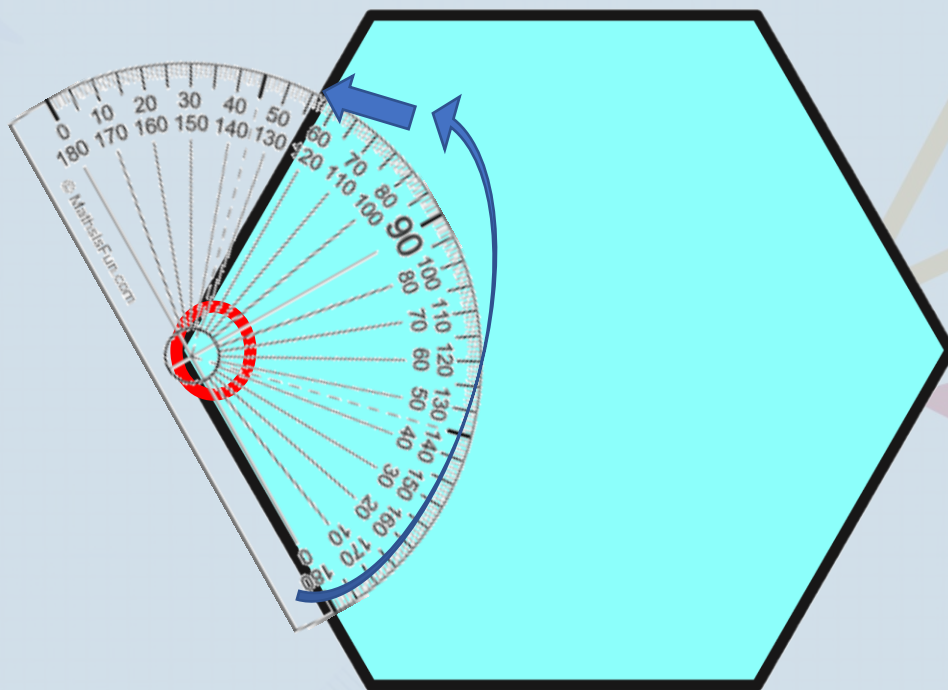
A regular polygon has straight sides of equal lengths, whereas an irregular polygon has unequal length sides and different angles.



## Varied Fluency 2

Identify the name of this shape.

Use a ruler and a protractor to decide whether it is a regular or irregular polygon.



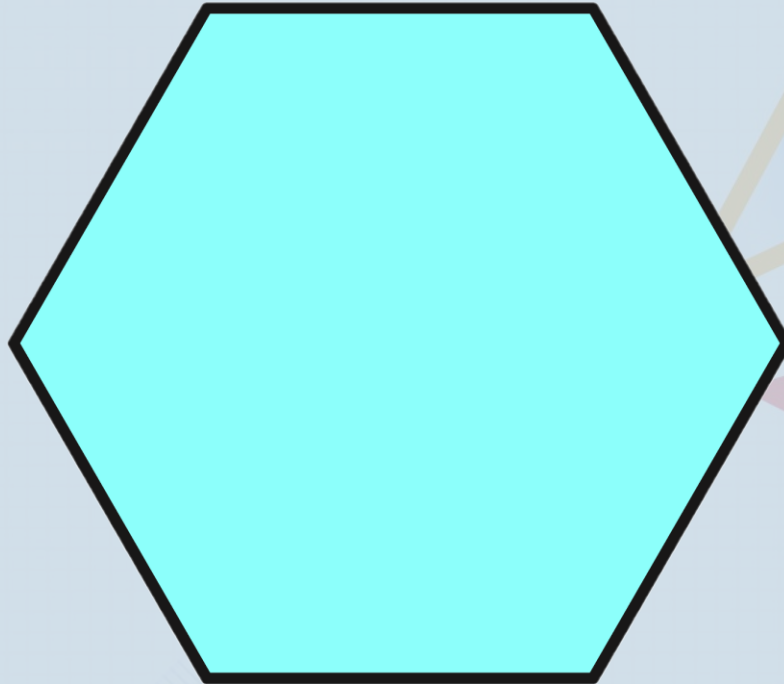
Remember to line the middle of your protractor up with the vertex (example above) and a line up with 0, then follow the same number line along for the measurement – so if it's the bottom 0, stay with the bottom numbers.



## Varied Fluency 2

Identify the name of this shape.

Use a ruler and a protractor to decide whether it is a regular or irregular polygon.



This is a hexagon. It is a regular polygon.

## Varied Fluency 4

Draw a regular pentagon.

Measure the length of each side and the size of each angle to make sure that they are equal.

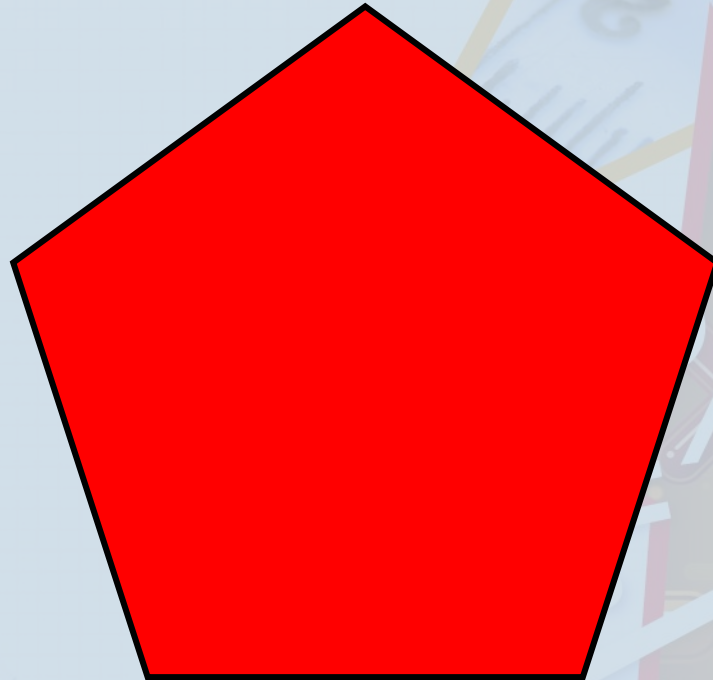
## Varied Fluency 4

Draw a regular pentagon.

Measure the length of each side and the size of each angle to make sure that they are equal.

You should have drawn a 5-sided shape.

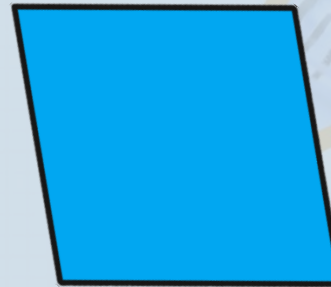
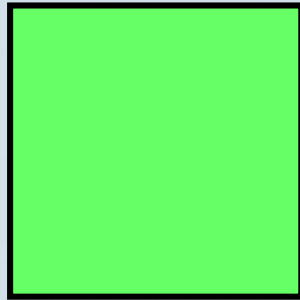
The sides should all be the same length and all angles should measure  $108^\circ$ .



## Reasoning 2

Jodie says:

**A rhombus and a square are both regular polygons because they both have sides of equal length.**



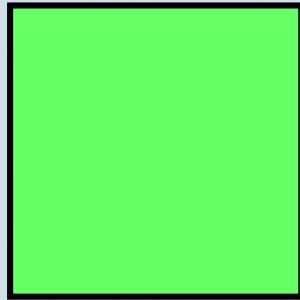
Is Jodie correct? Explain your answer.



## Reasoning 2

**Jodie says:**

**A rhombus and a square are both regular polygons because they both have sides of equal length.**



**Is Jodie correct? Explain your answer.**

**Jodie is incorrect. A square is a regular polygon as it has sides of equal length and each angle measures  $90^\circ$ .**

**However, a rhombus may have 4 sides of equal length, but it does not have 4 angles of equal size.**

Please have a go at today's activity.

Remember to measure your angles and lengths carefully  
and to use reasoning to explain your answers.

