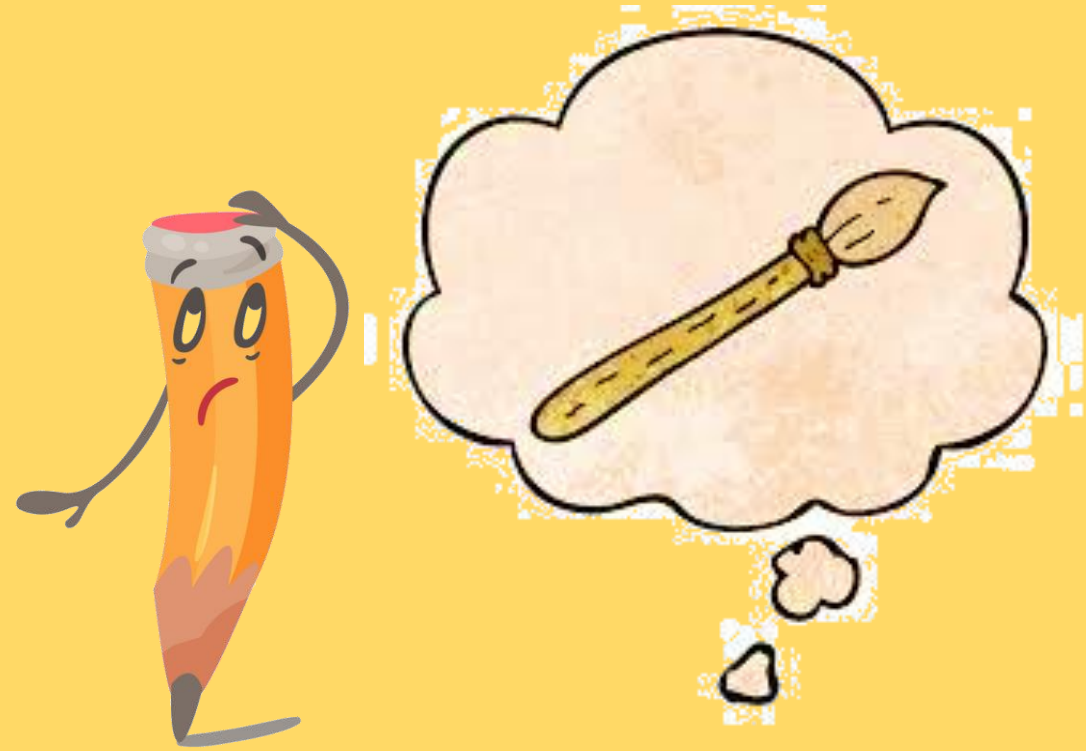


WALT research artwork.

WILF:

- ❖ *Identify the different features of artwork*
- ❖ *Identify colour tones*
- ❖ *Describe features*
- + *Suggest updates*



This term we are going to make Canopic Jars.

- *Canopic Jars were made in Ancient Egypt and used as part of the mummification process to store organs. We'll find out more about that process later this term! 😊*
- *The heads were modelled after the four sons of Horus - an Ancient Egyptian God, and each protected a different organ.*







The British
Museum

These are the Canopic Jars we are going to focus on today, which today can be found in The British Museum, London.

Canopic jars were originally made of clay, or sometimes limestone. That is the only clue you're getting!

Your task today is to look at these in detail and tell me:

- What materials you can see have been used and how they might have used them
- What colours and tones of colours you can see and where they might have come from
- Different shapes you can see
- Different features in the artwork you like and ones you would want to change.

Then, you can sketch your improvements, if you like! 😊

