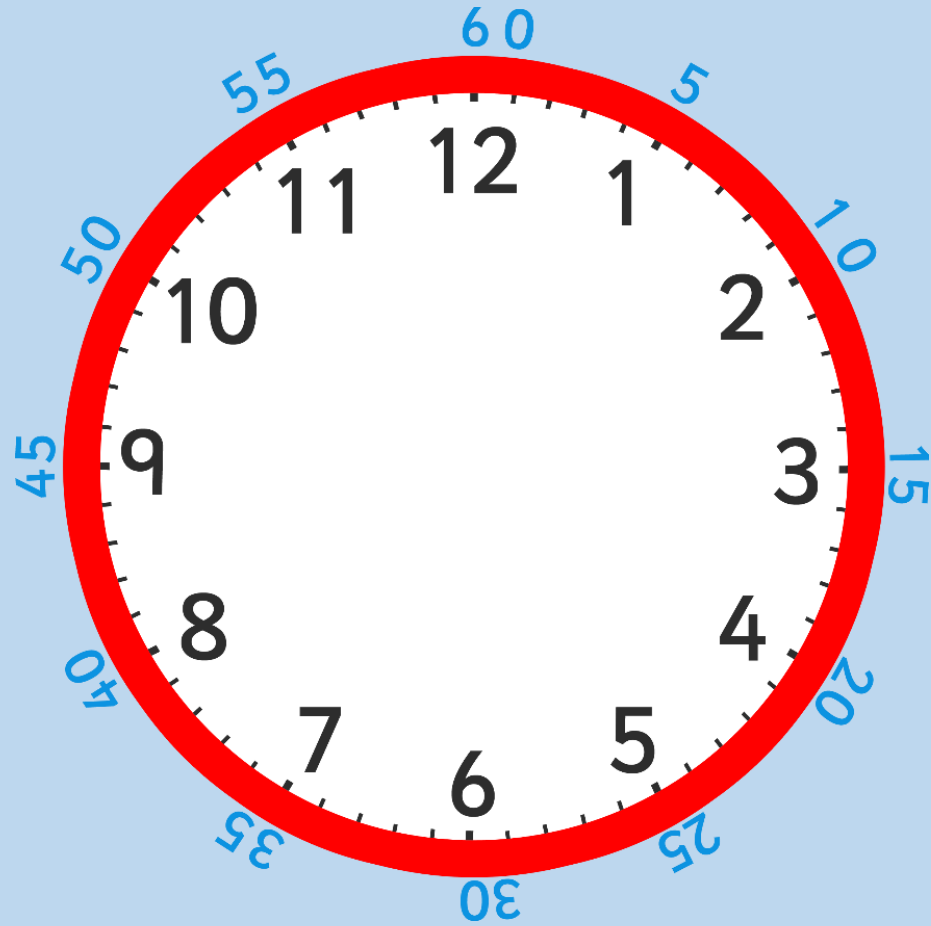


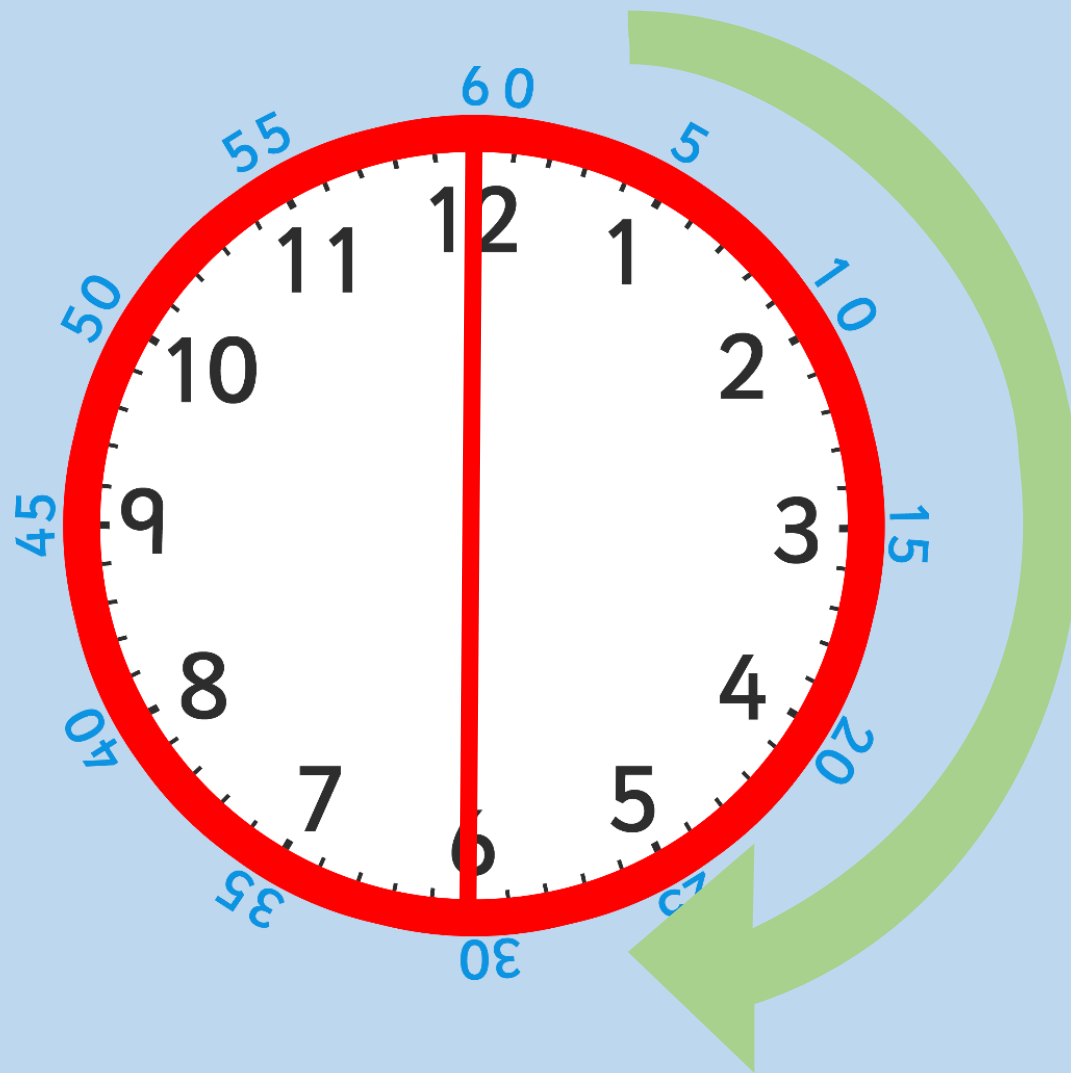
Thursday 14th May 2020

WALT – To tell the time at quarter past, half past and quarter to the hour.

A clock face is a whole circle.



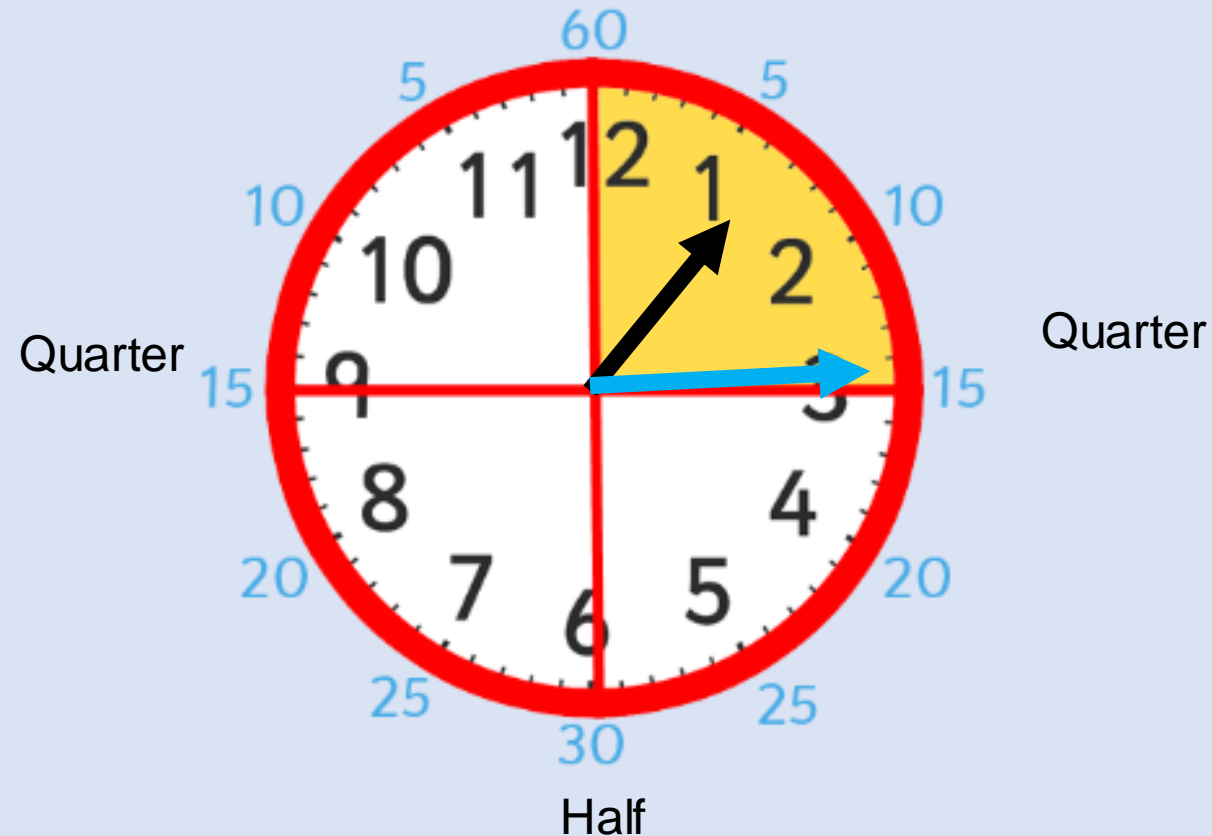
This can be split in half to show half an hour has past.



It can also be split in to quarters to show quarter past the hour and quarter to the hour.



Look at this time.
The minute hand is pointing at 3, which is the first quarter.
Where is the hour hand pointing? Is it on the number?
It's actually a quarter of the way between 1 and 2.



Quarter past 1

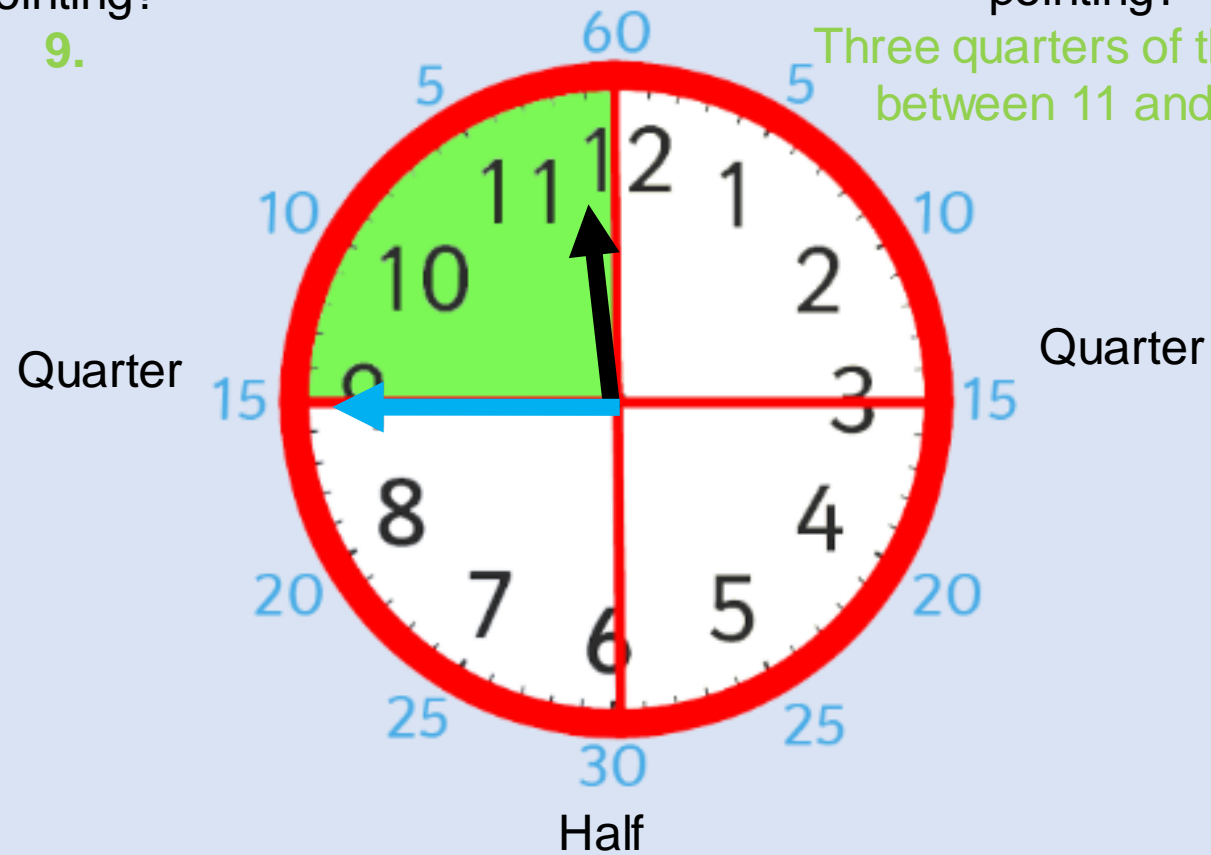
What time is this clock showing?

Where is the **minute hand** pointing?

9.

Where is the **hour hand** pointing?

Three quarters of the way between 11 and 12.



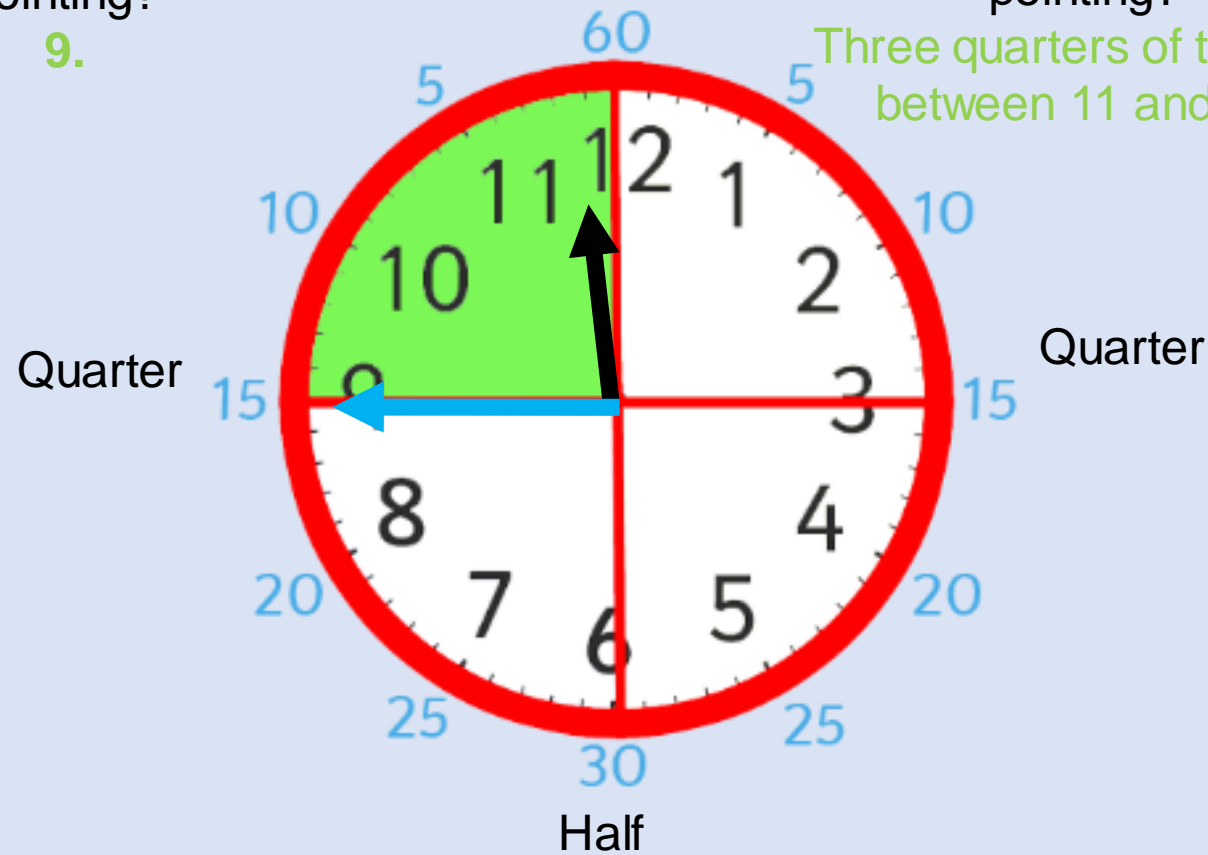
What time is this clock showing?

Where is the **minute hand** pointing?

9.

Where is the **hour hand** pointing?

Three quarters of the way between 11 and 12.



Quarter to 12.

Have a go at making these times on your clock.

Quarter past 2

Quarter to 9

Quarter past 5

Quarter to 4

Quarter past 8

Quarter to 11

BINGO

Turn over a time card. If you have that card place it on the picture. When you have filled up your whole card shout BINGO! In response

