

Wednesday 22nd April 2020

WALT – subtract a 2 digit number from a 2 digit number

Starter...

<https://www.youtube.com/watch?v=OCxvNtrcDIIs>

Counting in 2s

Yesterday we looked at subtracting a 1 digit number from a 2 digit number. Refresh your memory by working out the answers to these questions.

$$1. 17 - 4 =$$

$$2. 26 - 5 =$$

$$3. 59 - 4 =$$

Today we are going to subtract a 2 digit number from a 2 digit number!

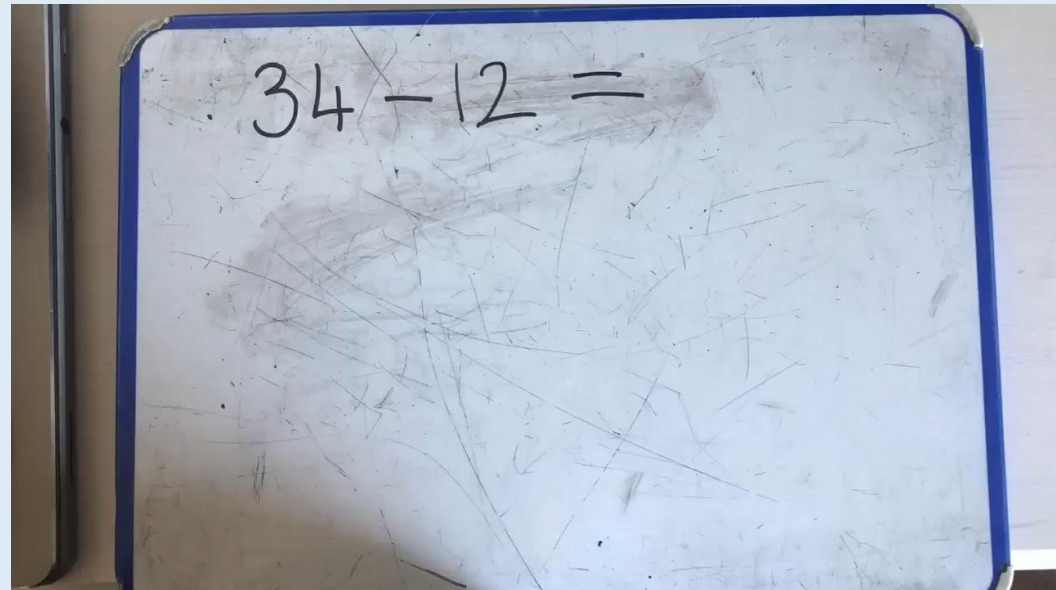
First put both numbers in to the correct columns.

Take away the ones.

Then take away the tens.

Try with me

$$34 - 12 =$$



First split both numbers in to the correct columns.

Take away the ones.

Then take away the tens.

Try by yourself and get an adult to check.

$$26 - 14 =$$

$$\begin{array}{r} 26 \\ -14 \\ \hline \end{array}$$

First split both numbers in to the correct columns.

Take away the ones.

Then take away the tens.

Try by yourself and get an adult to check.

$$26 - 14 =$$

$$\begin{array}{r} 26 \\ -14 \\ \hline 12 \end{array}$$

First split both numbers in to the correct columns.

Take away the ones.

Then take away the tens.

Try by yourself and get an adult to check.

$$48 - 23 =$$

$$\begin{array}{r} 48 \\ - 23 \\ \hline \end{array}$$

First split both numbers in to the correct columns.

Take away the ones.

Then take away the tens.

Try by yourself and get an adult to check.

$$48 - 23 =$$

$$\begin{array}{r} 48 \\ - 23 \\ \hline 25 \end{array}$$

Choose a set of questions to complete

Mild

$$24 - 11 =$$

$$28 - 15 =$$

$$26 - 15 =$$

$$37 - 14 =$$

$$46 - 23 =$$

Spicy

$$24 - 22 =$$

$$68 - 35 =$$

$$56 - 45 =$$

$$37 - 31 =$$

$$79 - 67 =$$

Challenge:

$$13 - 4 =$$

$$25 - 16 =$$