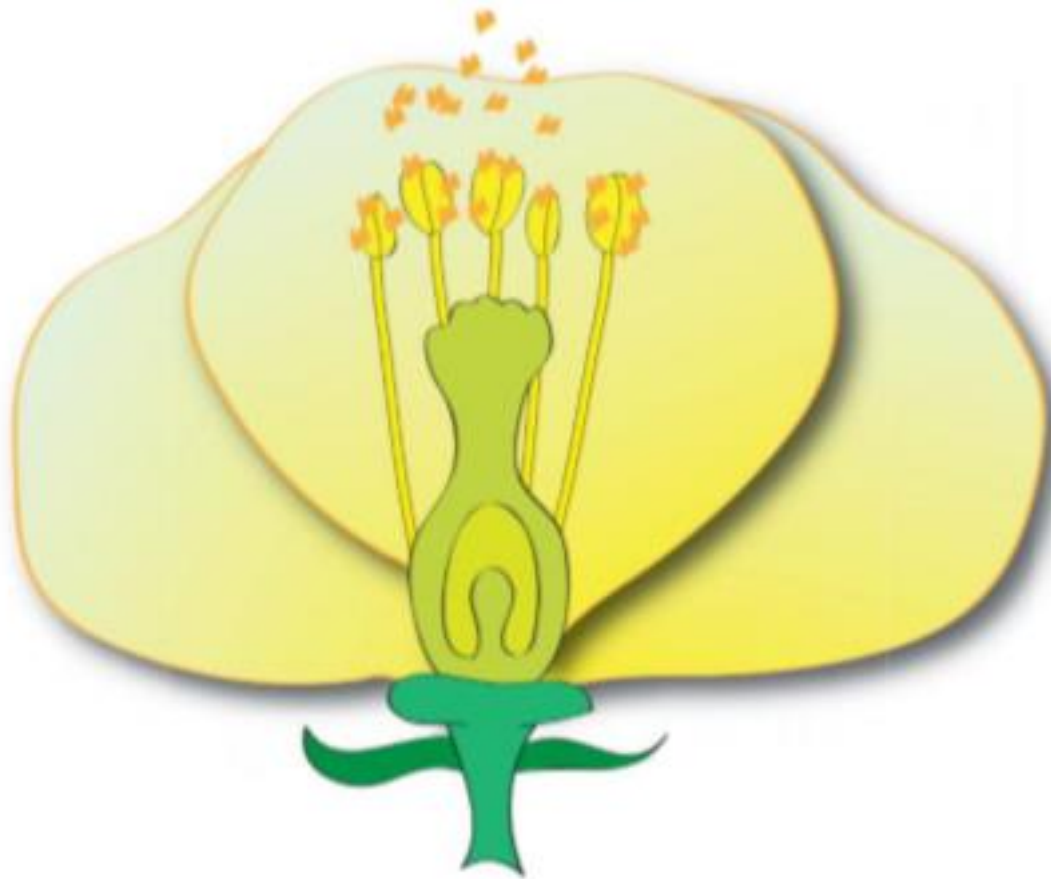


## The parts of a simple flower



Y5 Sc - Living things and their habitats - Session A  
© Hamilton Trust 2014

<b>Petal</b>	<b>Pollen</b>	<b>Anther</b>
<b>Sepal</b>	<b>Pistil</b>	<b>Sepal</b>
<b>Stamen</b>	<b>Style</b>	<b>Receptacle</b>
<b>Stigma</b>	<b>Filaments</b>	<b>Stem</b>
<b>Ovule</b>	<b>Ovary</b>	