

Q1

Tilly, Rhian and Chris are working out the difference between 35,975 and 12,017.

Tilly says the answer is 19,958.

Rhian says the answer is 27,958.

Chris says the answer is 23,958.

Use rounding to work out an **estimation** of the answer. Write your estimation as a number sentence.

$$36,000 - 12,000 = 24,000$$

One of the children is correct. Who do you think has the right answer?

Chris

1 mark

Q2

Keziah is working out the answer to a multiplication using a written method.

She has spilled ink on her work and some of the digits are covered over.

$$\begin{array}{r} 4 \text{ [ink]} 3 \text{ [ink]} 8 \\ \times \\ \hline 2 \text{ [ink]} 0, 1 \text{ [ink]} 0 \\ \hline 1 \quad 4 \end{array}$$

Write out the multiplication to show the missing digits.

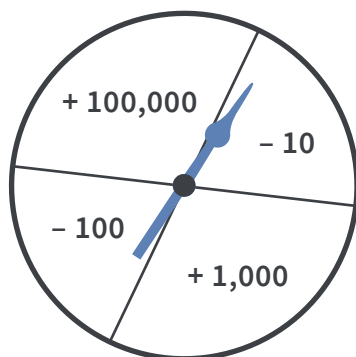
				4	0	3	8		
			×				5		
				2	0	,	1	9	0
						1	4		

1 mark

Q3

Adam starts with the number 250,478.

He spins this spinner **twice** and calculates his new score.



Which of these scores is **not** possible?

Tick your answers.

250,458

☐

360,478

☒

251,468

☐

350,488

☒

2 marks

	Requirement	Mark	Additional guidance
Q1	$36,000 - 12,000 = 24,000$ Chris is correct.	1	
Q2	$ \begin{array}{r} 4038 \\ \times \quad 5 \\ \hline 20,190 \\ \hline 14 \end{array} $	1	
Q3	360,478 350,488 Award ONE mark for each correct answer ticked.	2	