

WALT research artists.

WILF:

- ❖ *Explain who Claude Monet was.*
- ❖ *Understand what type of artwork he created.*
- ❖ *Know how long he was active as an artist.*



This term we will be painting landscapes in the style of impressionism. A very famous impressionist was Claude Monet. We will focus on his work to inspire us!



Please click on the image to watch a video all about Monet.



Some of Monet's most famous landscapes included:

Bridge over a Pond of Water Lilies, 1899.

This is a painting of Monet's pond in his garden in Giverny, France. It is very famous, as this installation (group) of paintings, 'Water Lilies' had over 250 paintings in it.

Do you have a favourite place outdoors to look at? 😊





Water Lilies, 1919 – inspired by the same landscape.



John Singer Sargent
Claude Monet Painting by the Edge of a Wood 1885

Women with Parasol, 1875.



Haystack, 1891.

Using the video and the paintings on this slide, what do you notice about Monet's style of painting?

What do you notice about:

The brush strokes.

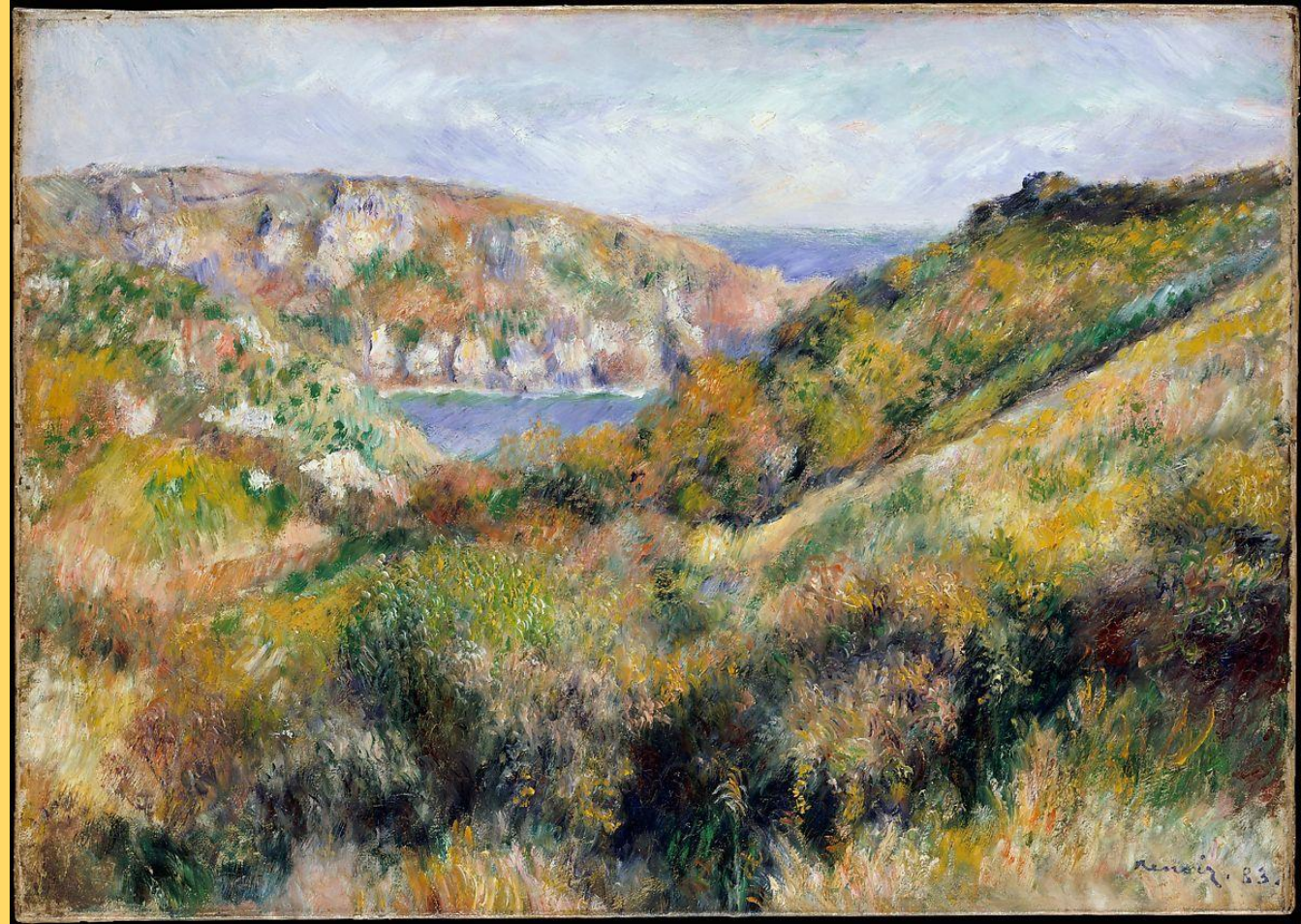
The focusses.

The way his style moves on as time passes.

The colours he chooses.

If it helps, compare it to this painting by another impressionist named Renoir.

Hills around the Bay of Moulin Huet, Guernsey, 1883



Please continue your research about Monet here:

[https://kids.kiddle.co/Claude Monet](https://kids.kiddle.co/Claude_Monet)

Then write a fact file about him as an artist. 😊