

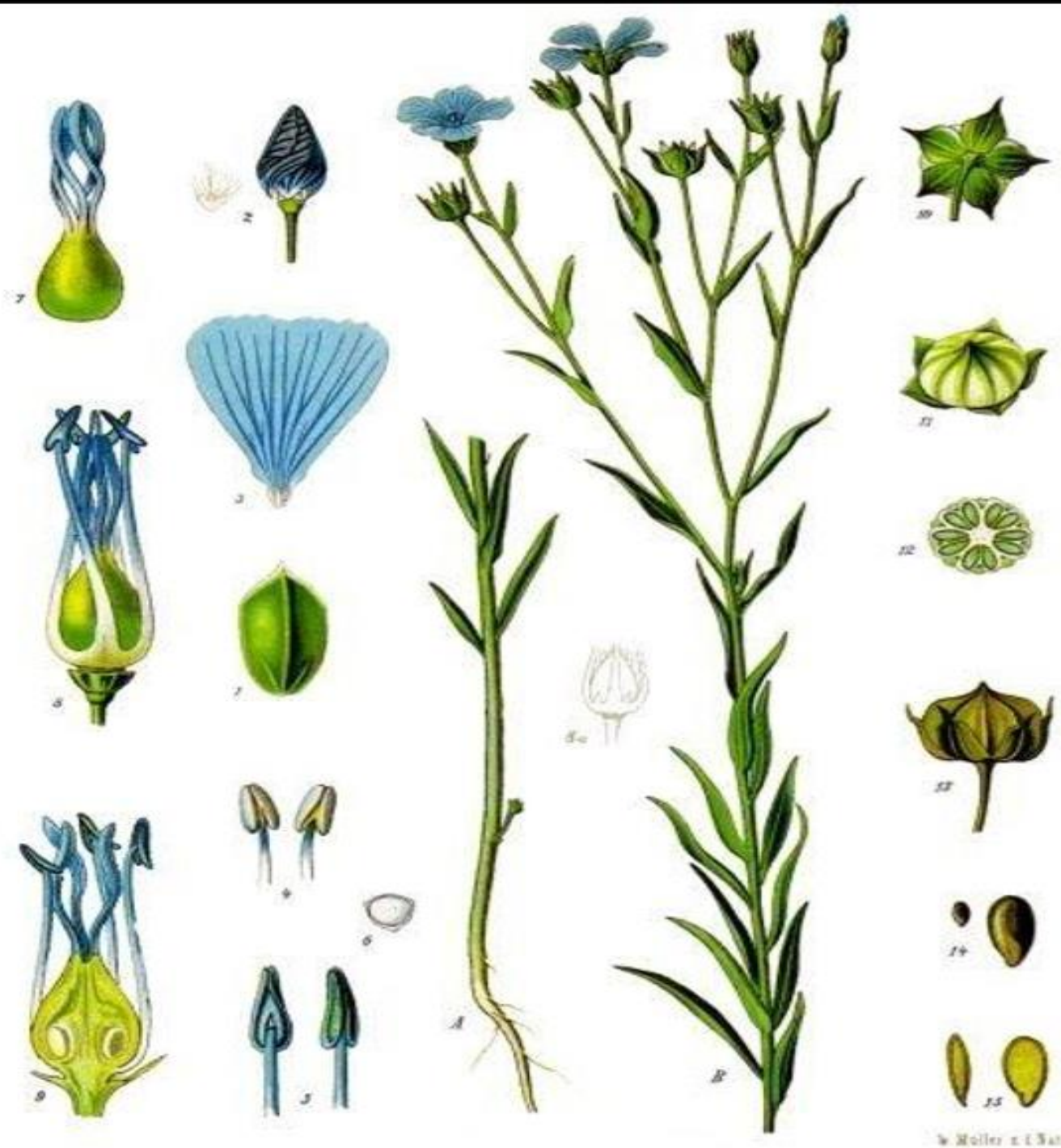
Images in this slide are from Hamilton Trust.



WALT identify the different parts of a flower and their functions.

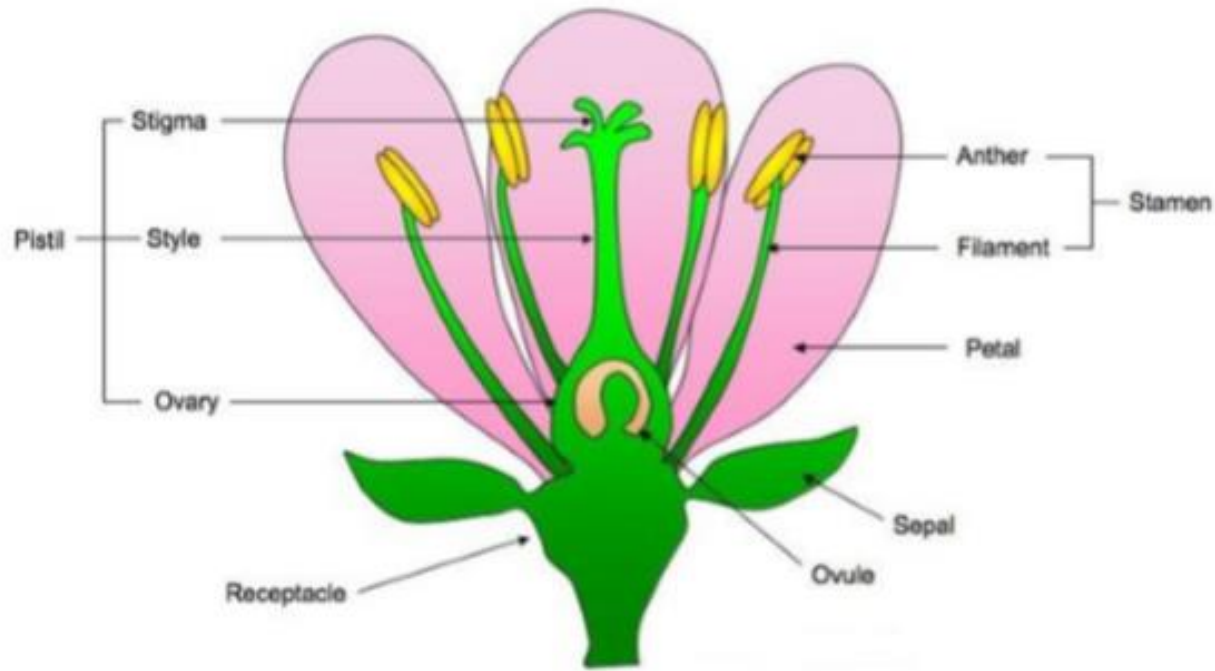
WILF:

- Name the different parts of a flower
- Explain what each part does and why that is important.

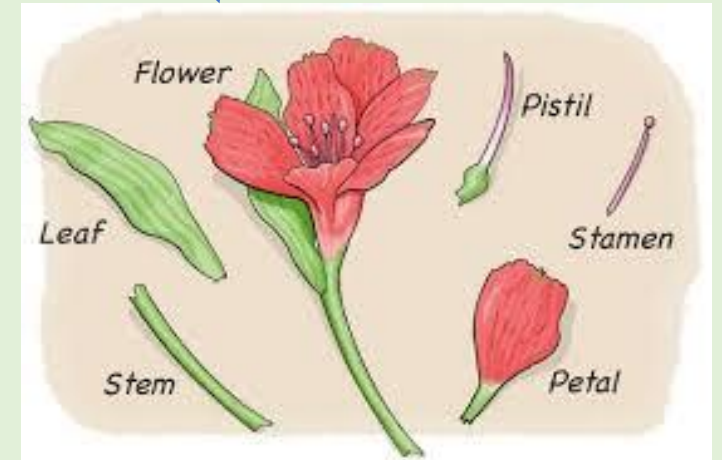


Which parts of a flower do you remember?

Jot down what you remember, then click on the picture to learn about the parts.



Click here to see a plant dissected into its parts. 😊

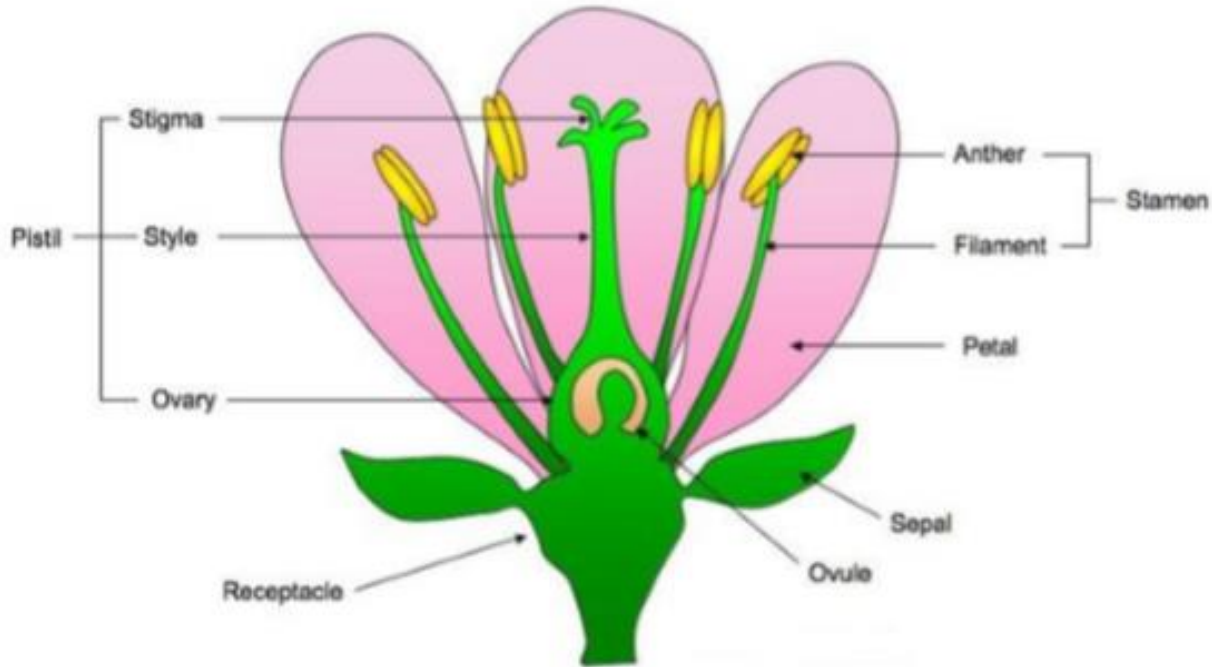


The **stamen** consists of the anther and the filament.

The **carpel** consists of the stigma, style and ovary. The pistil is a fused group of carpels.

The **receptacle** is a thickened part of the stem from which the flower organs grow.

Couldn't watch the video?



You will have learned before:

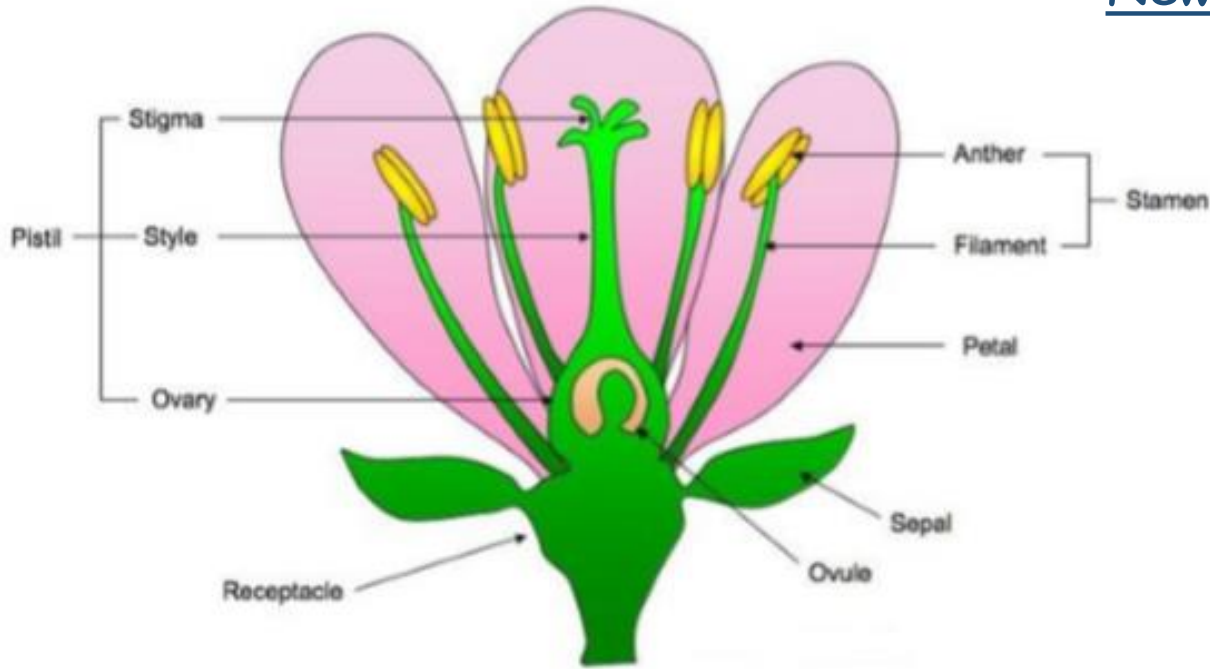
The **petal** attracts bees and other insects.

The sepal is the first part of the flower to form, and protects the flower whilst it grows.

The ovule contains and shelters the ovary (which contains the eggs!).

Couldn't watch the video?

New learning: The **stamen** has the anther and the filament, which produce pollen, enabling the plant to reproduce.



The **pistil** contains the stigma part of the plant - it is longest, so makes it easier for insects to touch the plant and collect and drop off pollen.

This pollen then goes to the ovaries (the female organ producing eggs).

The **stamen** consists of the anther and the filament.

The **carpel** consists of the stigma, style and ovary. The pistil is a fused group of carpels.

The **receptacle** is a thickened part of the stem from which the flower organs grow.

The **receptacle** captures food and helps these organ parts grow.

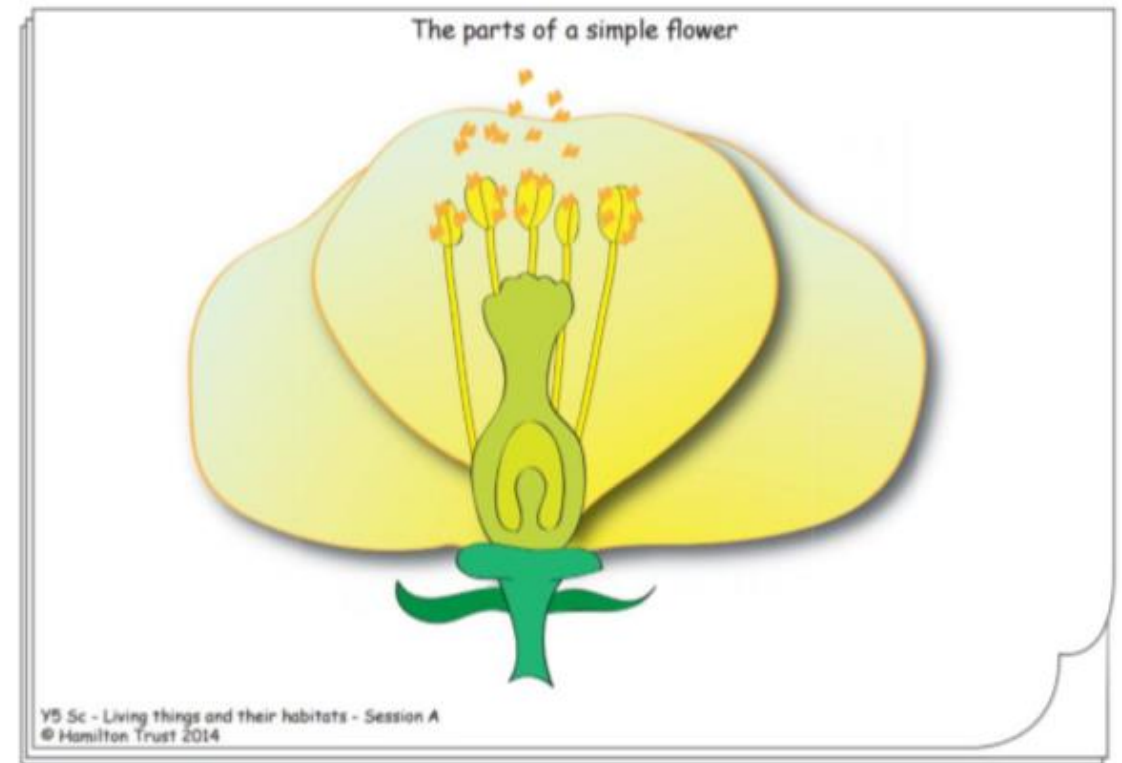
Your task for today:

Using the sheet, match the labels to the different parts of the flower, then explain the function of each part. Use as much Scientific vocabulary as possible in your explanation.

Working with an adult and have a flower?

Follow the instructions on 'Week 3. Thursday. Science ADULT led Plant Dissection Instructions' - use a ruler or a plastic knife for your dissection to remain safe.

Then, stick the parts on a piece of paper and label them using these key words, explaining their function.



Petal	Pollen	Anther
Sepal	Pistil	Sepal
Stamen	Style	Receptacle
Stigma	Filaments	Stem
Ovule	Ovary	