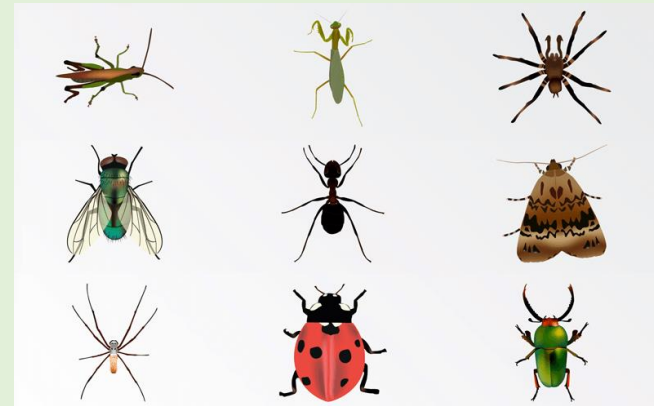




WALT understand why reproduction is important for the lifecycle.

WILF: Understand why reproduction is important for the lifecycle; Identify the lifespans and habitats of different animals.



First, let's recap on the classes of animals

Draw a line between the animals and their species.



Reptiles

Insects

Amphibians

Birds

Mammals





Amphibians



Mammals



Reptiles



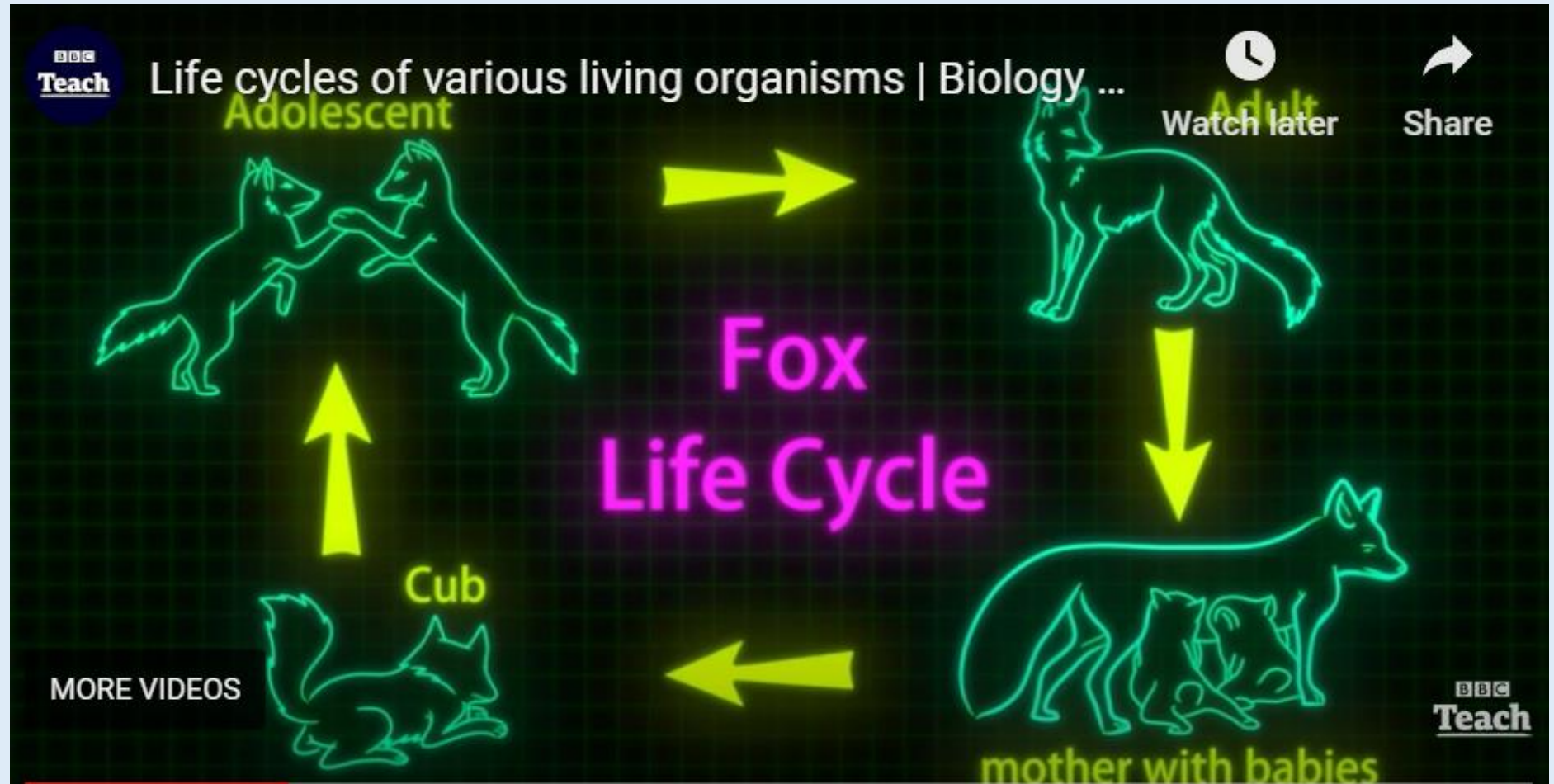
Insects

Click on the picture of each animal to recap what they are.



Birds

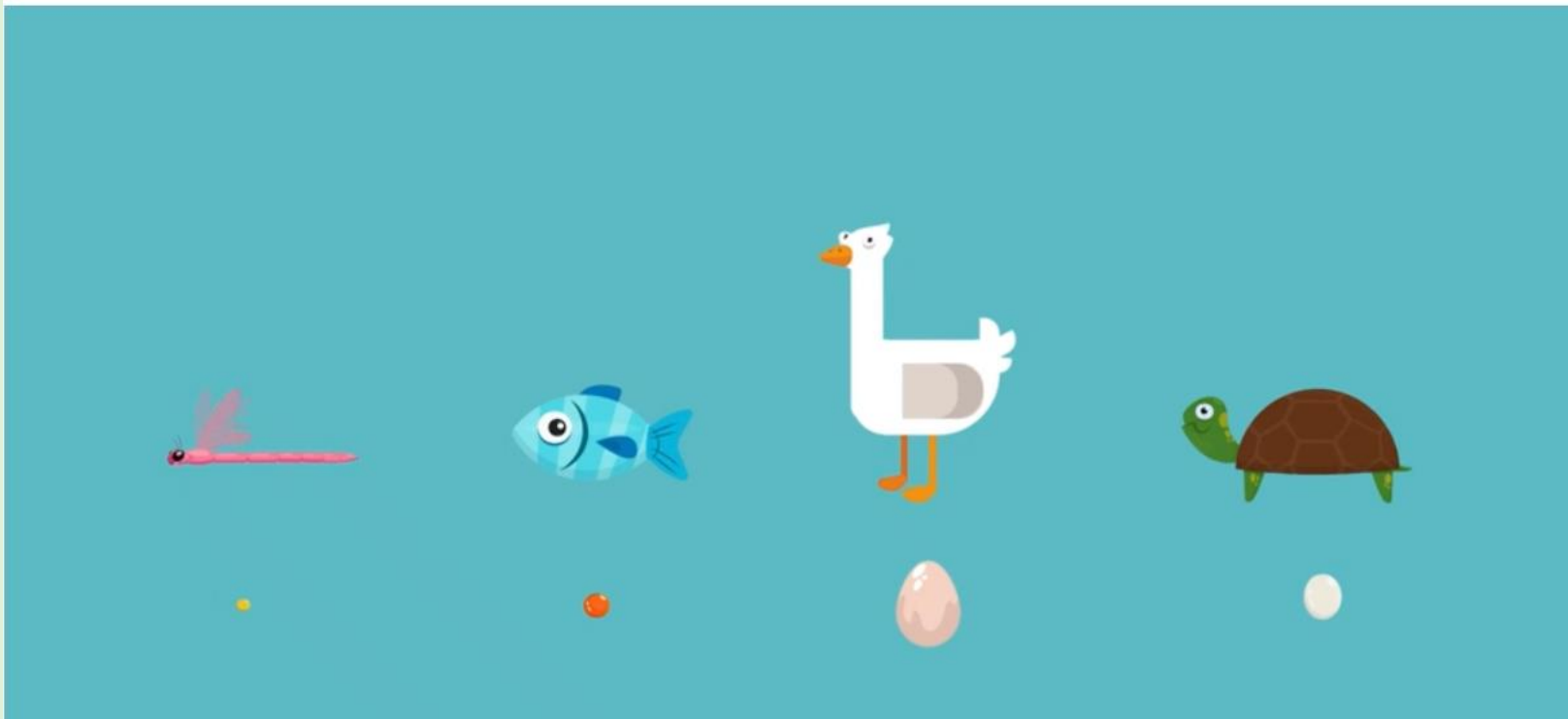
Lifecycles - please watch the video by clicking on the image. 😊



<https://safeYouTube.net/w/Y2g8>

Reproduction is an important part of the lifecycle for all animals.

To find out what this is, please watch the video below by clicking on the image (don't worry, this one is only 1 minute long!).



<https://www.bbc.co.uk/bitesize/topics/zgssgk7/articles/z9xb39q>

Why do you think reproduction is important?
What would happen if living things didn't reproduce?



Please have a look at 'Week 2 - Science Life Cycle Examples' - this will show you the lifecycles of different animals.

Then, choose two animals from different classes to research.

I would like you to find out:

It's habitat (where it lives)

How long it lives (it's lifespan)

Match it to the type of life cycle using the sheets →

For example, Miss Lester would choose a Fox and a Turtle. She would search 'Fox habitat' or 'Turtle habitat' in Kiddle.

Use these websites:

<https://www.kiddle.co/> Make sure you use the search terms! 'Habitat' 'lifespan'

<https://www.natgeokids.com/uk/>

<https://kids.britannica.com/>

