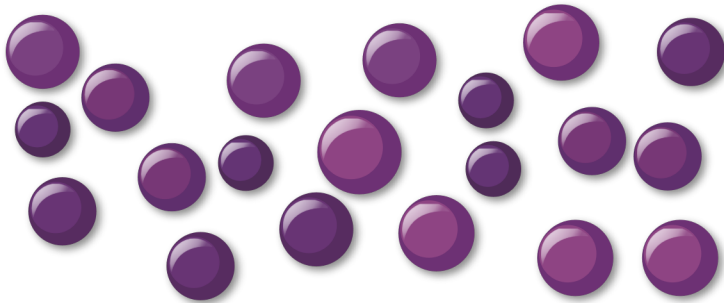


Q1

Anika has 20 grapes.

She gives  $\frac{1}{5}$  of the grapes to her sister.

Draw a ring around the number of grapes she has left.



1 mark

Q2

This table shows how numbers change when they are rounded in different ways.

Complete the missing numbers.

Number	Rounded to the nearest 1,000	Rounded to the nearest 100,000
175,461		200,000
119,397	119,000	
655,603		

2 marks

Q3

Chelsea thinks of a number.

She subtracts 546 from it.

The answer is 258.

What was the number Chelsea first thought of?

1 mark