

WALT define gestation.

WILF:

- Understand what gestation is.
- Identify the gestation periods of different animals.
- Look for patterns in gestation periods and draw conclusions.
- Use graphs to represent data.



This term we will be learning about the human lifecycle.

Take a picture of yourself (please do not send it to me). Have a look.

Do you think you looked the same as a baby?

How do you think you will look in 2 years time?

10 years time?

How do you think the way you look will change?



To help you think about it,
this is Miss Lester when she
was your age! (Year 5)

What do you already know? Who is who? Which order do they go in? Number them. 😊

I am enjoying playing with my granddaughter and having time to read in my garden.

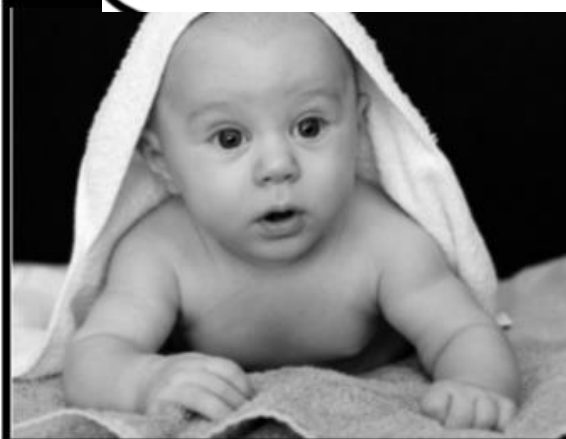
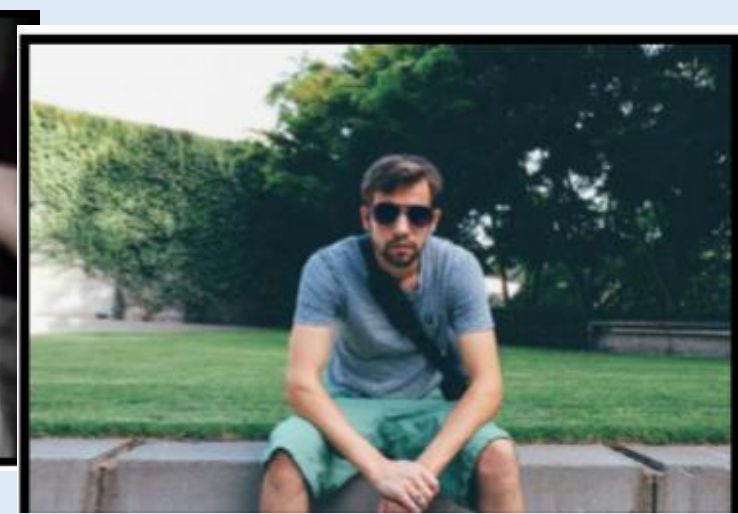
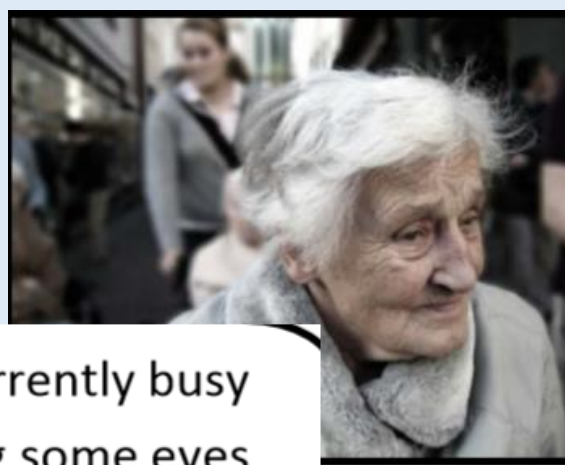
I am currently busy finding my own home and beginning a career.

I am currently busy growing some eyes and ears.

I am currently busy with work and my family. My hair is starting to go grey!

I am currently busy learning to read and ride my bike. My body is growing fast!

I am currently busy learning to crawl. My body is growing fast!



Write down any questions that you currently have about the life cycle on a piece of paper and send it to me with your work. 😊



This term we will be writing a non-fiction book all about the human life cycle!

The first stage in any mammal's life cycle is called *gestation*.

The *gestation period* is the length of time that the unborn child (*foetus*) spends *developing* in the *womb* of the mother, before it is *fully developed* and able to be born safely. During this time, it gains *nutrients* through a *placenta*, which for humans, connects at the belly button. Their children when born are called *offspring*.

How long do you think the gestation period is for a mammal?





The gestation period varies greatly between species.

For example: a horse's gestation period is around 11 months, whereas chimpanzees have a gestation period of around 8 months.

Today you are going to research the gestation periods of different animals.

You will need to find their life span and gestation period, list them, then compare them to see if you can find any correlations (similarities) between them.



This is the table you will be using. Choose five animals other than humans, then use kiddle.co and search terms to find the information.

Example: "tiger gestation period"
"tiger offspring amount"

Then, create a graph to help you find the correlations (links) you find.

There is an example on the next slide.

Animal	Gestation (in days)	Average life span (in years)	Size of animal	Number of offspring per pregnancy
Human				
African elephant				
Tiger				
Giraffe				
Chimpanzee				
Wolf				
Grey squirrel				
Pig				
Hamster				
Dog				
Cat				
Mouse				
Horse				
Humpback whale				

Example:

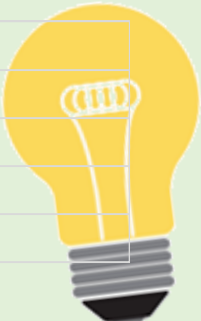
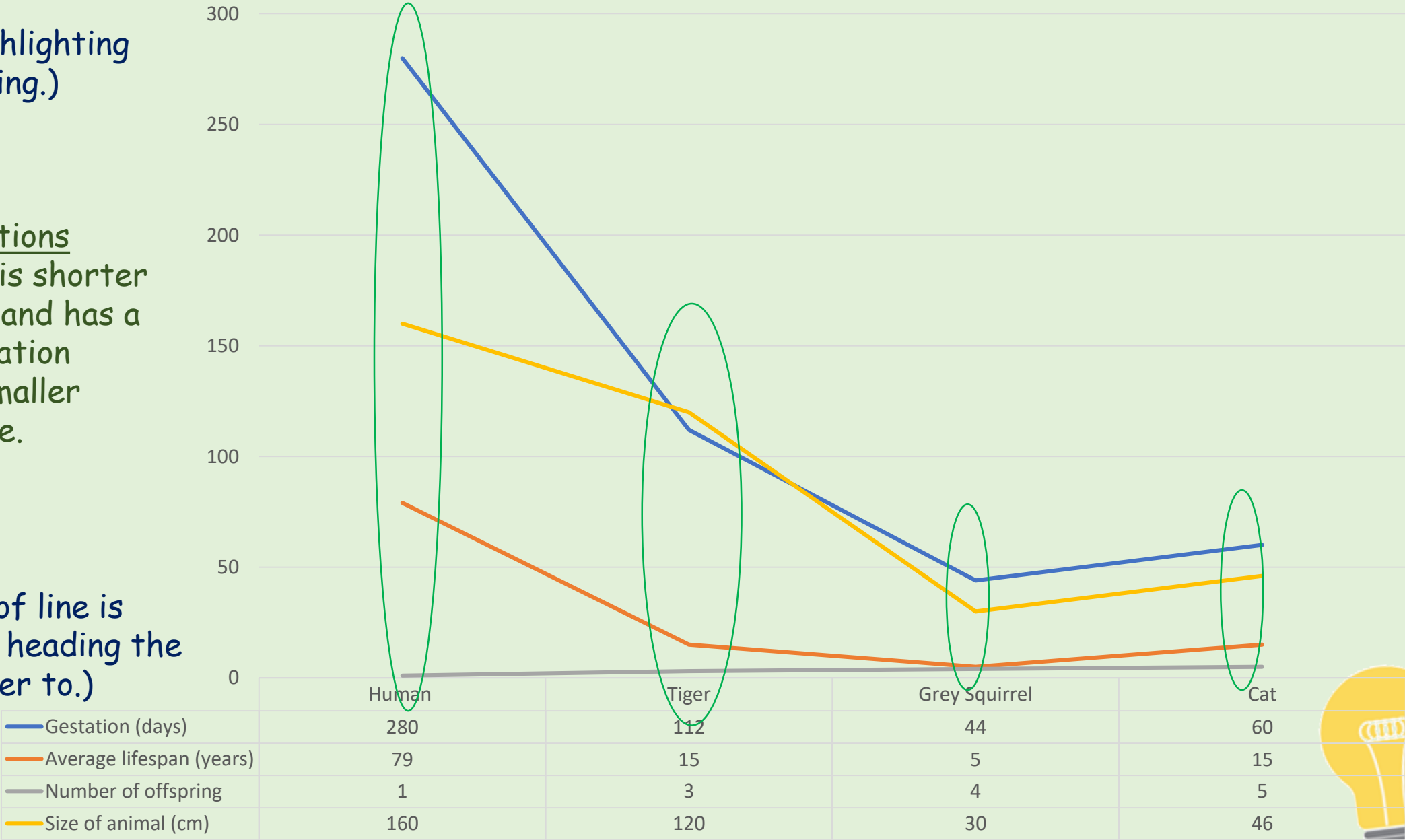
(Me highlighting something.)

Correlations

The squirrel is shorter than the cat and has a shorter gestation period and smaller offspring size.

(The colour of line is shows which heading the numbers refer to.)

Gestation Periods of Mammals



1) If you want to create this on power point, click 'Insert' next to the Home tab, then 'Chart', then 'Line graph' and enter your data into the excel sheet like we did in computing.

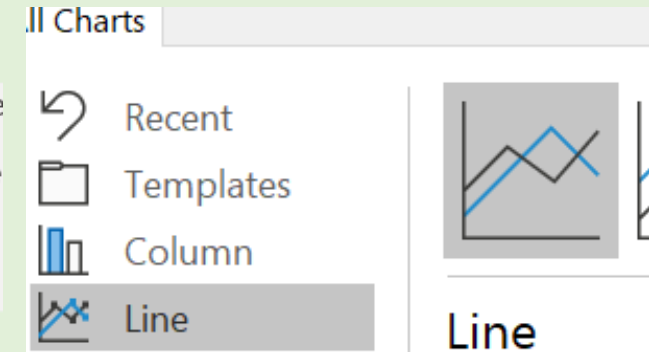
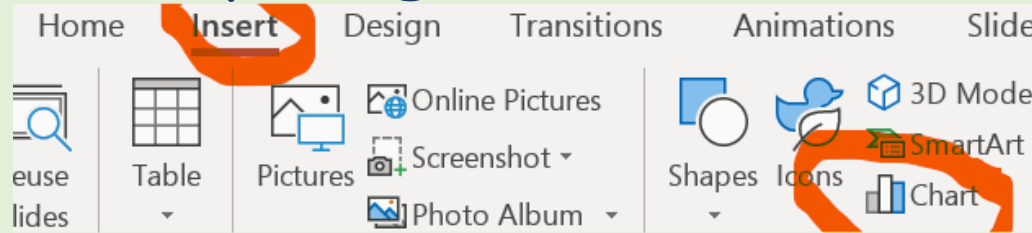


Chart in Microsoft PowerPoint								
	A	B	C	D	E	F	G	H
1	Animal below	Series 1	Series 2	Series 3	<---- EDIT your headings here			
2	Tiger	4.3	2.4	2				
3	Category 2	2.5	4.4	2	<---edit your data here after searching			
4	Category 3	3.5	1.8	3				
5	Category 4	4.5	2.8	5				
6								



2) If this all proves a bit too tricky, complete instead 'Week 1. Thursday. Science Gestation Match', then use kiddle.co to help you match them and make a comparison.