

Year 6 – Summer Block 3 – Statistics
Good morning, Year 6. It's 13th May 2020.

Part 3 – Reasoning and Problem Solving

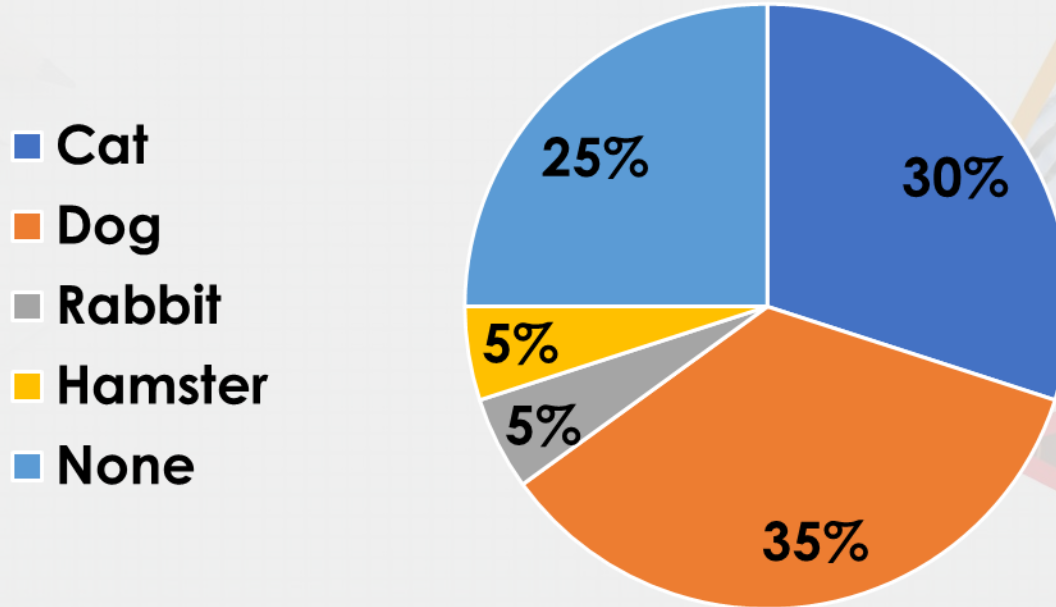
**WALT Read and Interpret
Pie Charts with
Percentages**

***Look out for my notes in
green.***

Problem Solving 1

Children were asked what pets they have. This was the result:

Pets

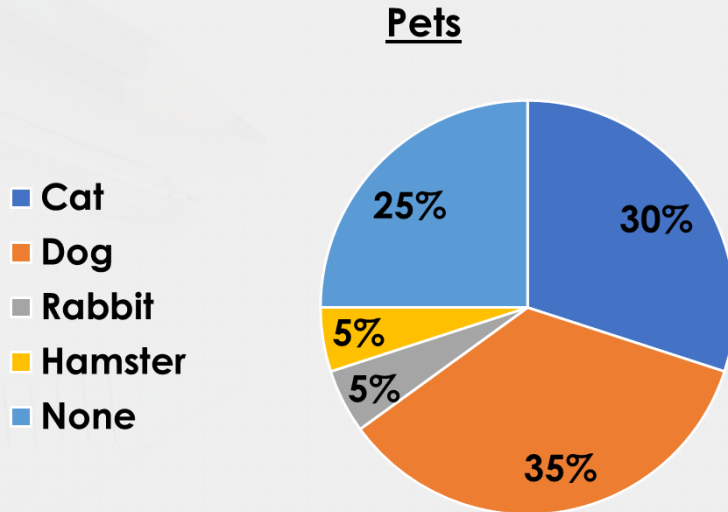


10 children have a hamster.

Use this information to help you convert the pie chart into a table.

Problem Solving 1

Children were asked what pets they have. This was the result:



Cat	60
Dog	70
Rabbit	10
Hamster	10
None	50

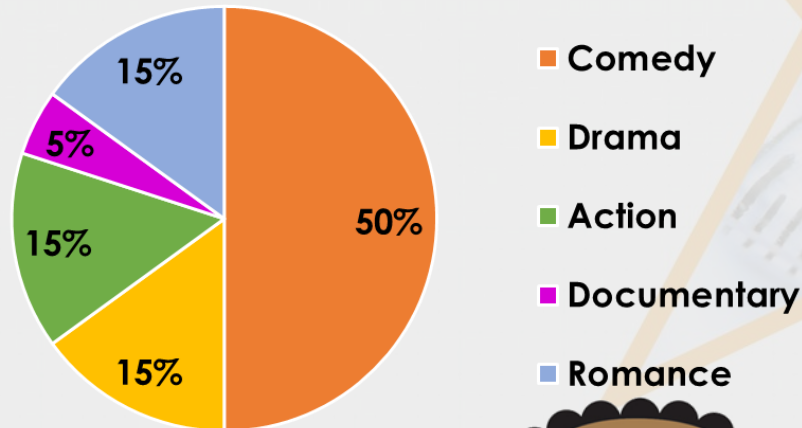
10 children have a hamster.

Use this information to help you convert the pie chart into a table.

Reasoning 1

Lisa is reading a pie chart about the favourite film genres of 60 children.

Favourite Film Genres



She says,

The same people
chose drama, action
and romance.



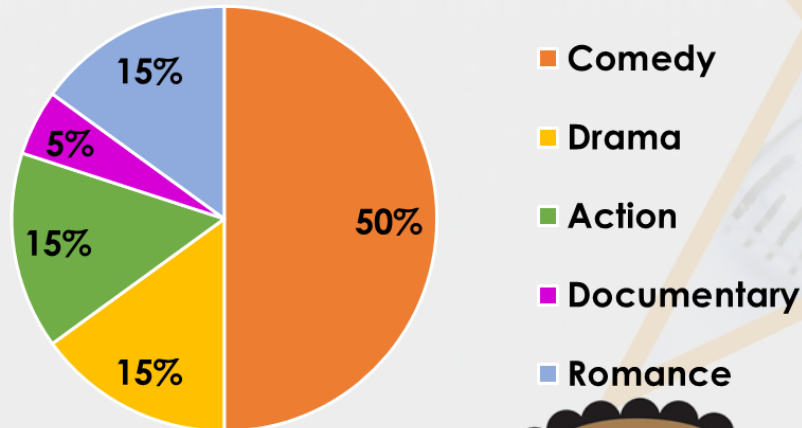
Lisa

Is she right? Explain how you know.

Reasoning 1

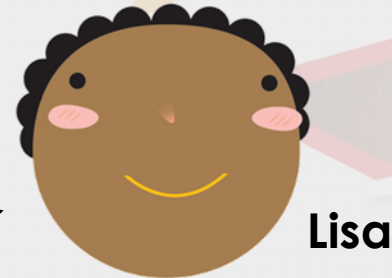
Lisa is reading a pie chart about the favourite film genres of 60 children.

Favourite Film Genres



She says,

The same people
chose drama, action
and romance.



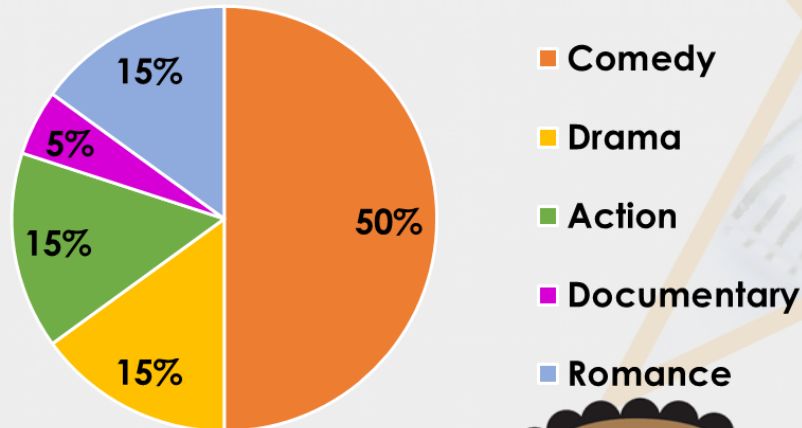
Lisa

Is she right? Explain how you know. Lisa is not correct because...

Reasoning 1

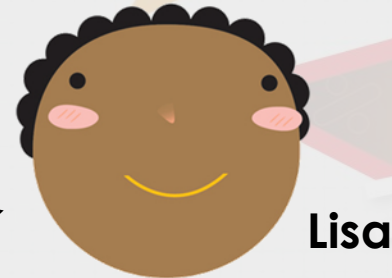
Lisa is reading a pie chart about the favourite film genres of 60 children.

Favourite Film Genres



She says,

The same people
chose drama, action
and romance.

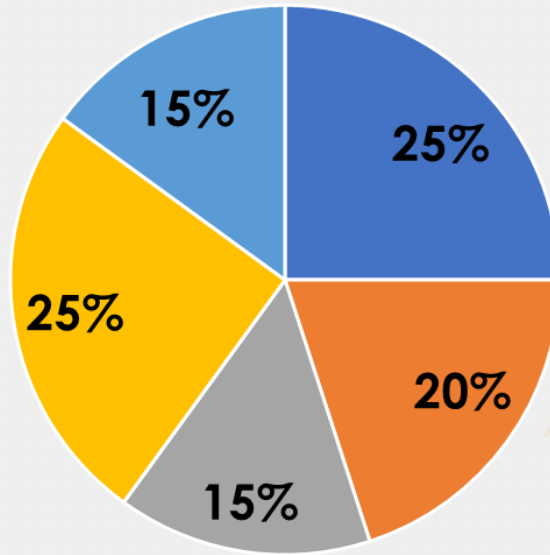


Is she right? Explain how you know. **Lisa is not correct because the pie chart tells us the number of different people who voted for their favourite film genres. The numbers are the same, not the people.**

Reasoning 2

What information can you get from this pie chart?

What does it not tell you?

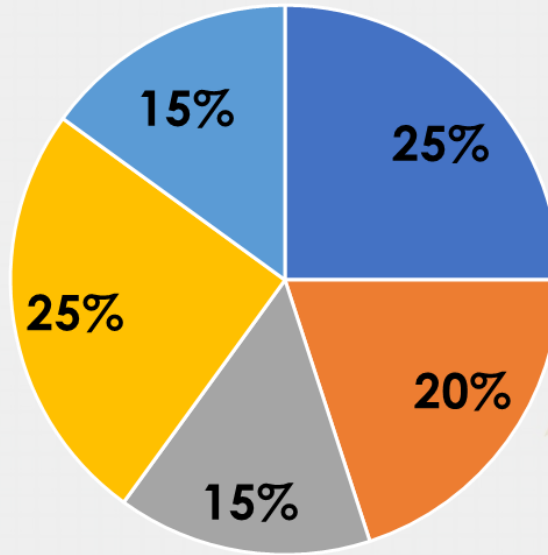


■ Maths ■ English ■ Art ■ PE ■ Science

Reasoning 2

What information can you get from this pie chart?

What does it not tell you?



■ Maths ■ English ■ Art ■ PE ■ Science

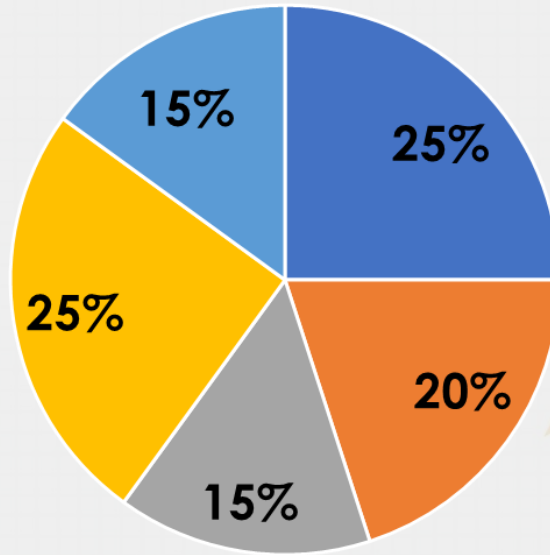
You can tell that...

You cannot tell...

Reasoning 2

What information can you get from this pie chart?

What does it not tell you?



■ Maths ■ English ■ Art ■ PE ■ Science

You can tell that the same amount of people chose art and science. You cannot tell how many chose any subject because the chart doesn't give any information on how many people were asked.

Well done! It's over to you now.

Go to Part 4 and choose your Star Challenge! Normal rules apply: page 1 will give you an easier challenge, page 2 will be about the same as what we've just practised and page 3 will be more of a stretch.

You only need to do the first set of questions on your chosen Star Challenge – the 'A' questions. If you want extra practice, you can then do the next set of questions – the 'B' questions. When you finish, don't forget to mark your answers before sharing, so I can see where you need help.