

Wednesday 13th May 2020

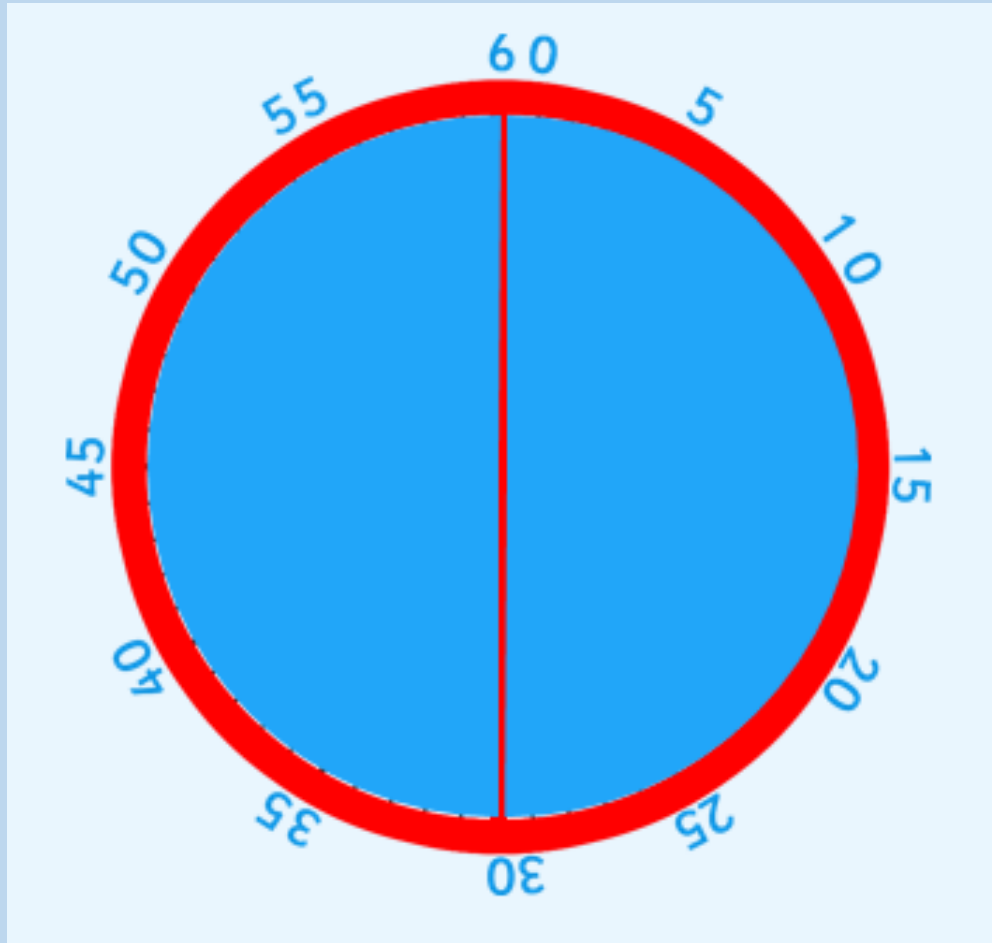
WALT – understand the term ‘half past’

Starter - recap

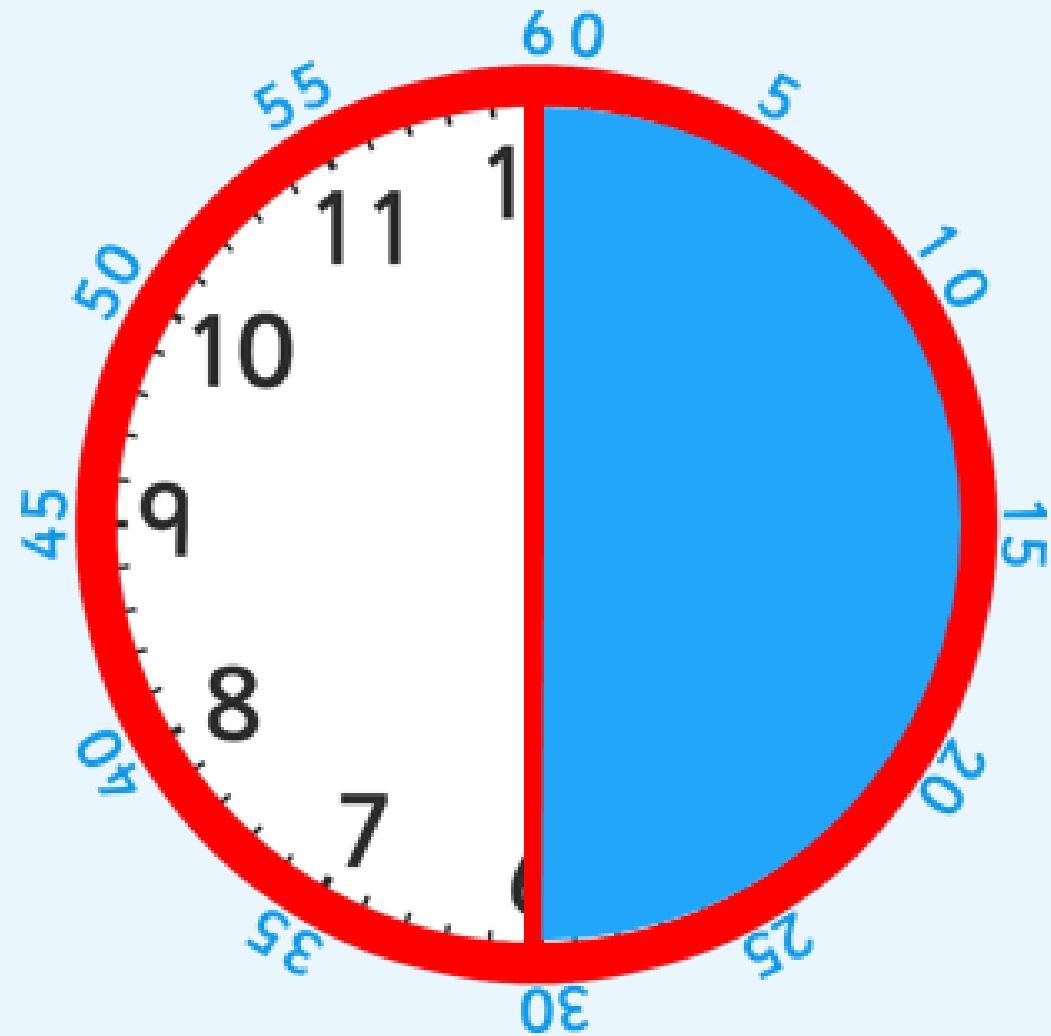
Make this time on your clock and explain to somebody how you know it is that time.

6 o'clock

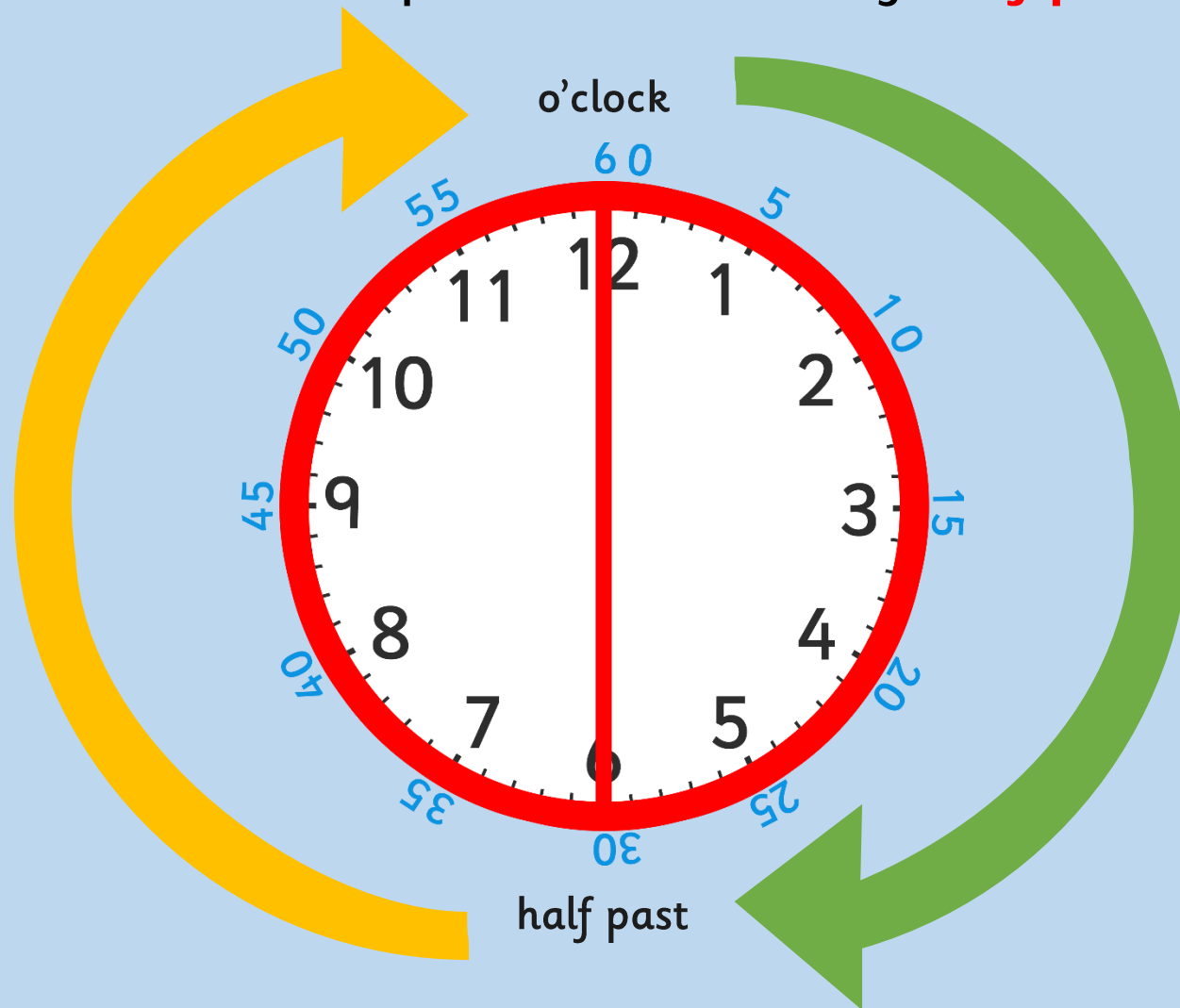
1 hour = 60 minutes



There are 30 minutes in half of an hour.



- When it is 30 minutes past the hour we say '**half past**' the hour.



- Look at this time.
- The minute hand is pointing at 6, which is halfway around the clock.
- Where is the hour hand pointing? Is it on the number?
 - It's half way between 1 and 2.



half past

- What time is this clock showing?

Where is the **minute hand** pointing?

6

Where is the **hour hand** pointing?

halfway between 11 and 12



half past

- What time is this clock showing?

Where is the **minute hand** pointing?

6

Where is the **hour hand** pointing?

halfway between 11 and 12



half past

Half past 11

- What do you notice about the small hand?
- What time is this clock showing?

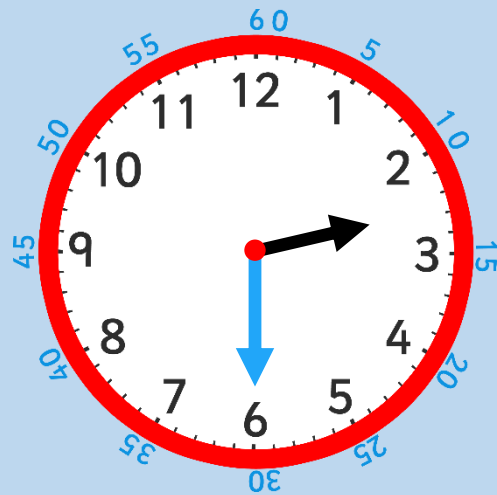


- What do you notice about the small hand?
 - It is halfway between 3 and 4.
- What time is this clock showing?
 - Half past three.



half past

- Which clock is showing **half past 2**?
- Which clock is showing **half past 9**?
- Which clock is showing **half past 7**?



Using your clock can you make these times in less than a minute?

- Half past 7
- 4 o'clock
- Half past 4
- Half past 9
- 2 o'clock

ACTIVITY – Can you write what time is on the clock? (in response)

Challenge: (in response)

Write the time that is **1 hour after** the time on each clock.







Write the time that is **2 hours before** the time on each clock.



