

## Mammals

# How Animals Grow

These animals are mammals. They grow inside their mother's womb.

When they are born, they look quite like their parents, only much smaller!

Their mothers feed them with milk and take care of them as they grow.

Their bodies grow bigger and stronger, until they are able to take care of themselves.

This is a baby human inside its mother's womb.



Mammals

# How Animals Grow



Pregnancy



Baby



Adult



## Birds

# How Animals Grow

Mother birds lay eggs. They sit on them to keep them warm, until the eggs are ready to hatch.



Baby birds are tiny, blind and weak when they hatch. Their parents keep them safe and bring them food.



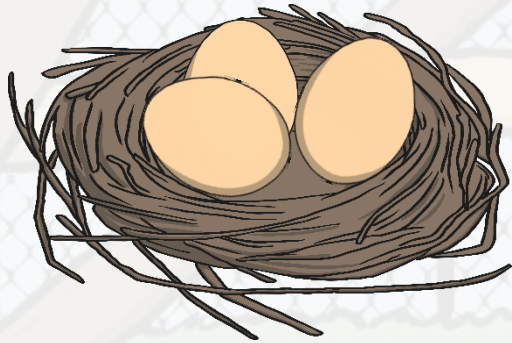
The chicks grow bigger and stronger, and grow thick feathers. Soon they are able to fly away and have babies of their own.

This is a baby chicken inside its egg.

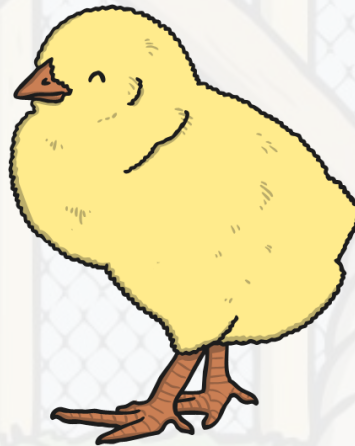


Birds

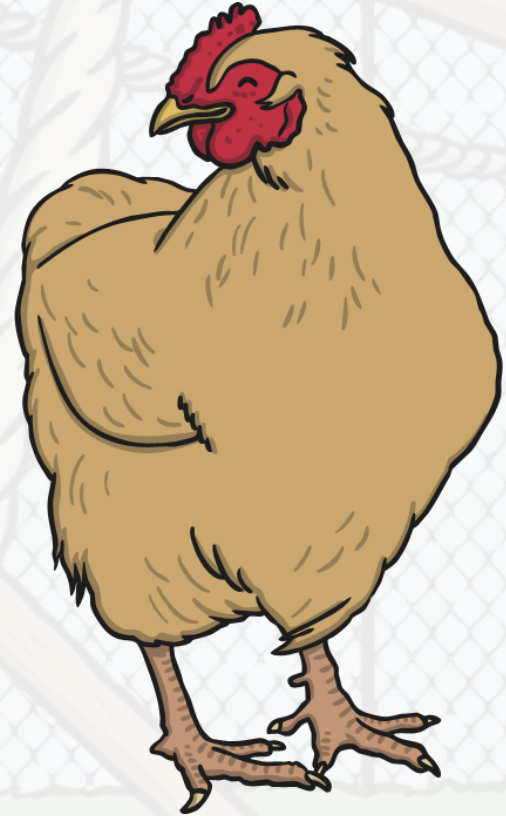
# How Animals Grow



Eggs



Chick



Adult



## Amphibians

# How Animals Grow

Most amphibians lay eggs in the water. These eggs are called spawn.

When they hatch, the tiny tadpoles live in the water.

They eventually grow legs!

Finally their tails fall off, and they are able to climb out of the water.

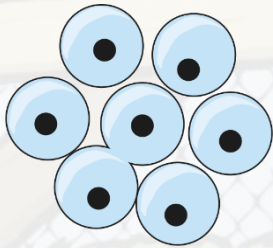
This is a tadpole inside its egg.



Photo courtesy of dichohocho, berniedup, DaveHuth, afroese (@flickr.com) - granted under creative commons licence - attribution

Amphibians

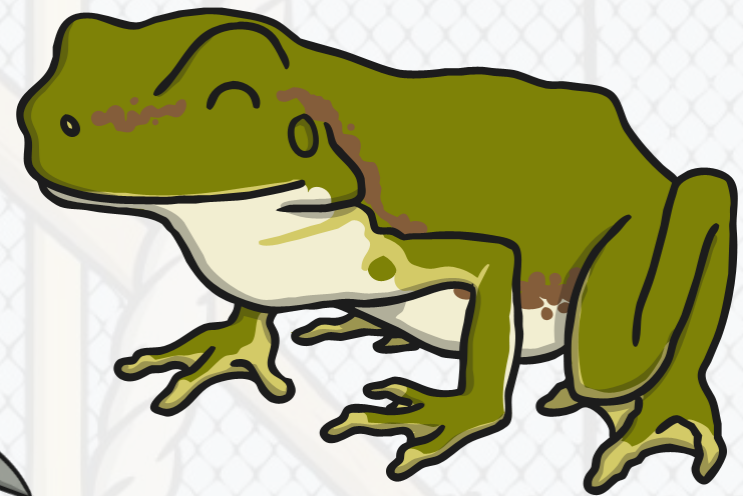
# How Animals Grow



Spawn



Tadpole



Adult



## Reptiles

# How Animals Grow

Most reptiles are born from eggs, though some are not.

Reptile hatchlings look like their parents.

Usually reptile mothers do not look after their babies. The babies take care of themselves as they grow.

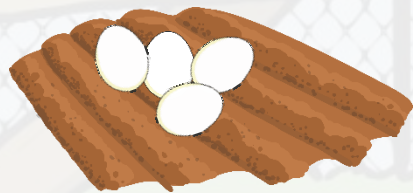
This is a baby lizard inside its egg.





Reptiles

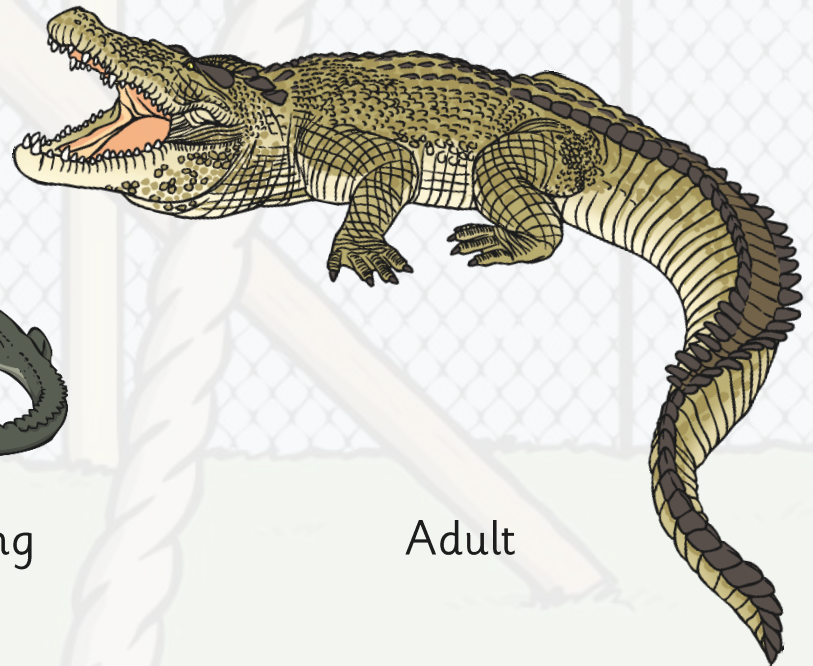
# How Animals Grow



Eggs



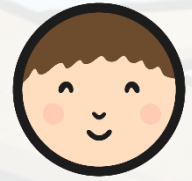
Hatchling



Adult

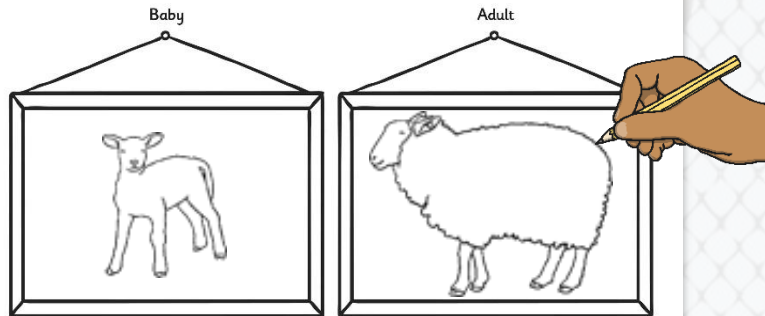


# How Animals Grow



## How Animals Grow

Choose an animal. Draw how it looks when it is a baby and how it looks when it is an adult.  
Describe how your animal changes as it grows.



How does it change as it grows?