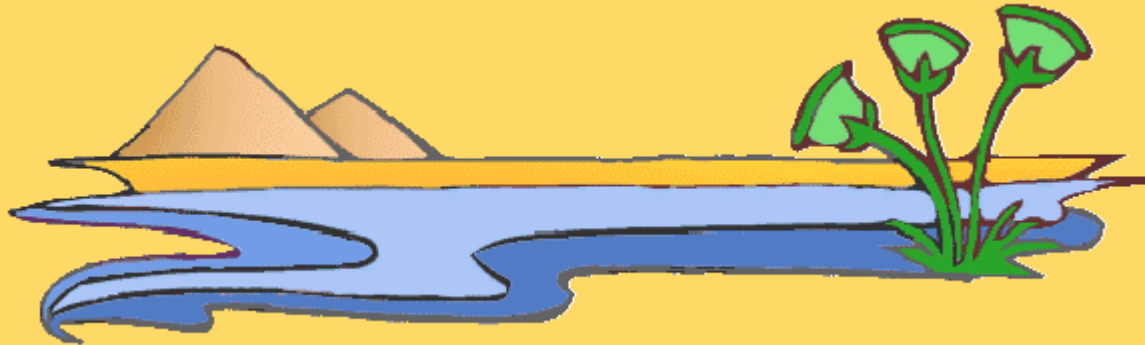


# WALT locate Ancient Egypt.

*WILF:*

- *Identify Ancient Egypt on a map;*
- *Identify the main places the Egyptians inhabited (lived)*
- *Identify physical and human features*
- *Give reasons for why each feature would have been useful.*

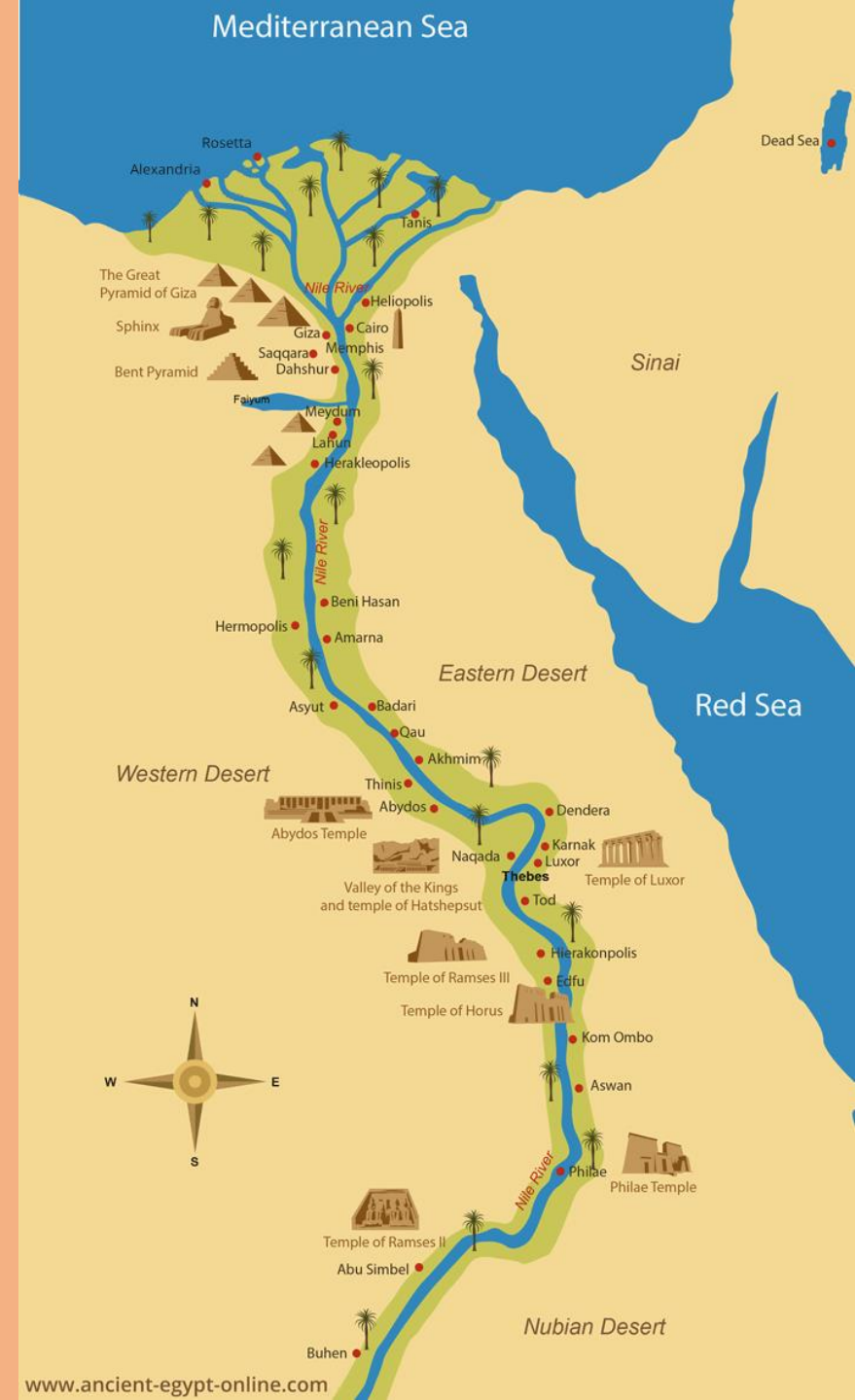


# Today we're exploring Ancient Egypt!

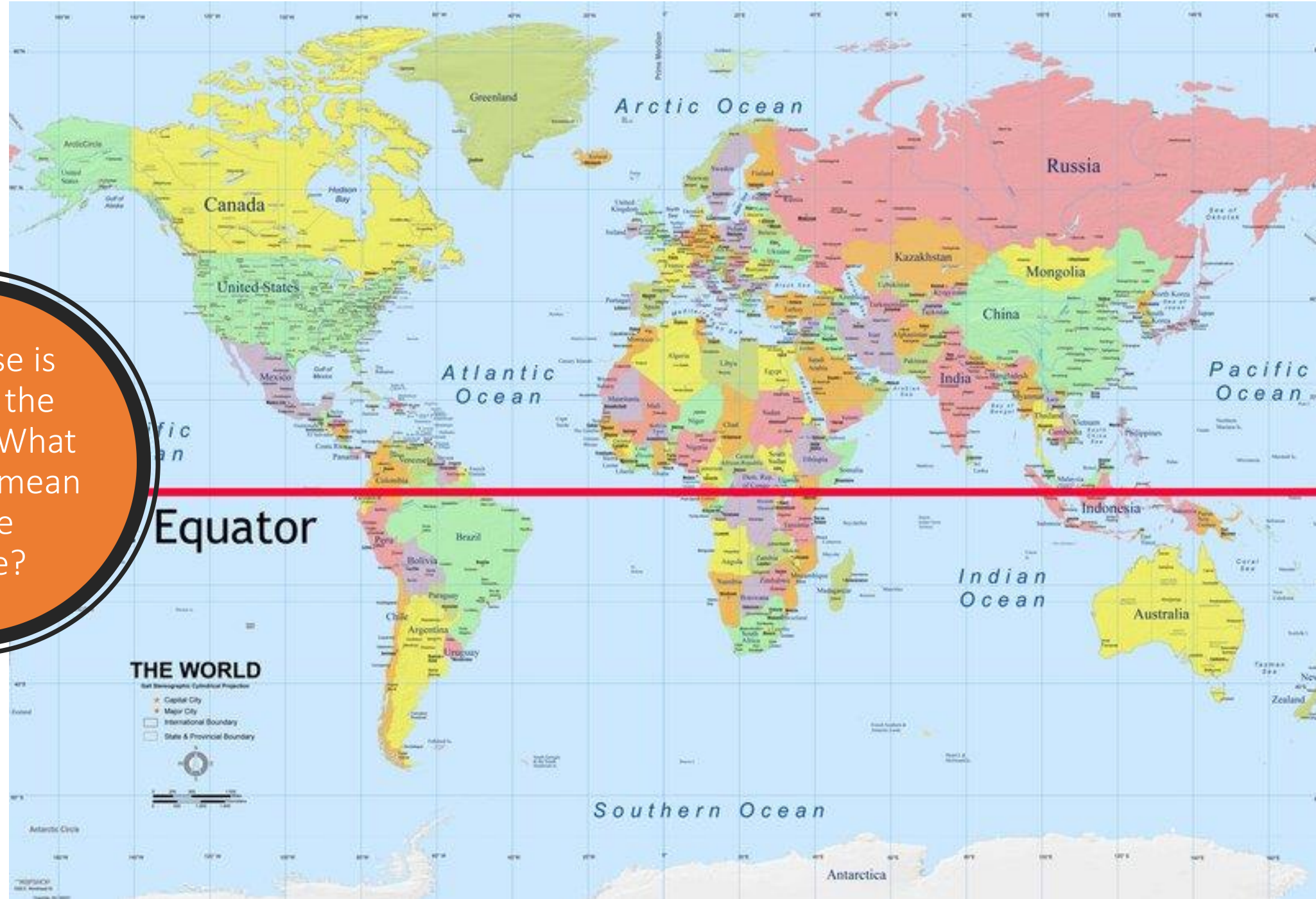
This is a map of Ancient Egypt.

Please click on it and explore the map in 'Explore Ancient Egypt'.

Please don't go to other links on the site as we will be using this website again to explore other things. 😊

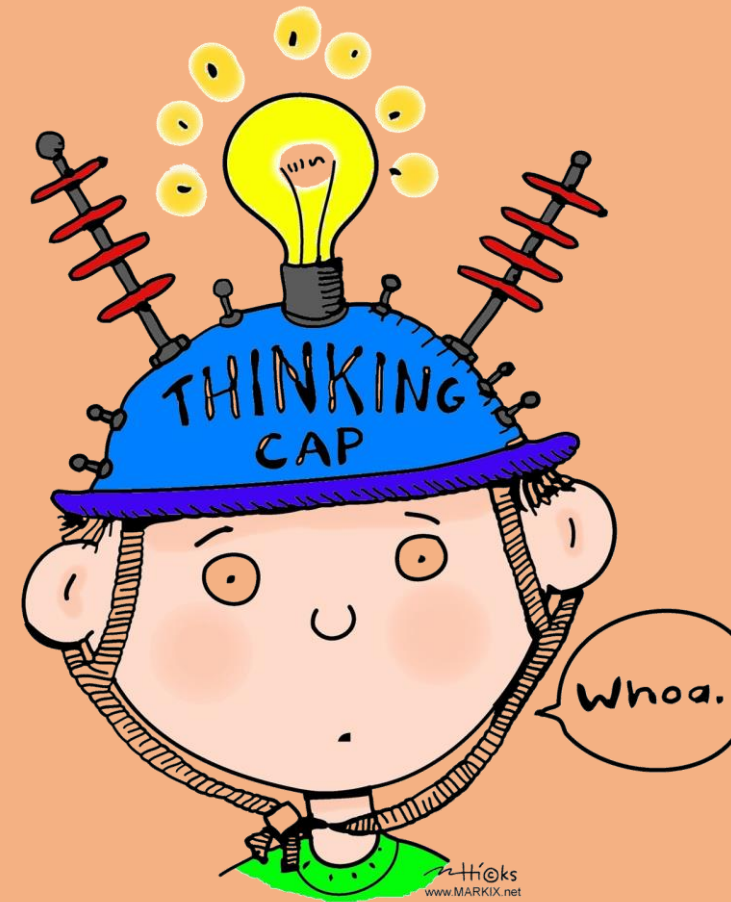


How close is  
Egypt to the  
Equator? What  
does that mean  
for the  
climate?



You can click on the thinking cap to find out about the animals that lived in Ancient Egypt!

What does it tell us about their life?





Today I would like you to either:

Draw your own map of Ancient Egypt with a key of the human and physical resources there and why they were useful.

OR

Look at the Ancient Egypt Map and label it with information you find about what is in each place, which resources were available and why it was useful. This is saved as a picture so you can zoom in on it if you open it in Seesaw.

For example: The Nile provided water which was useful for farming so that they could eat.

The Reeds provided material for papyrus so that they could write.

